

**morton.**

**Crows Nest** 53/236 Pacific Highway

🛏 2 🚿 2 🚗 2

Peacefully set to the rear of the 'Cosmopolitan' building, this spacious apartment offers a penthouse style retreat enhanced by expansive 180 degree views. With light filled interiors and a stunning full length entertainer's terrace, this stylish residence creates a perfect harmony of indoor/outdoor living.

- Spacious open plan living allows for sophisticated indoor/outdoor entertaining
- Sweeping views from all main rooms through to Iron Cove with harbour glimpses
- Full length terrace extends the width of the home and is surrounded by flora
- Two generously proportioned bedrooms both with built-in robes
- Light filled main bedroom with ensuite and terrace access
- Gourmet gas kitchen with granite benches and stainless steel appliances including dishwasher
- Full main bathroom with tub and separate concealed laundry
- Intercom entry, lift access to secure basement parking and large storage cage

**View**

As advertised or by appointment

**Agents**

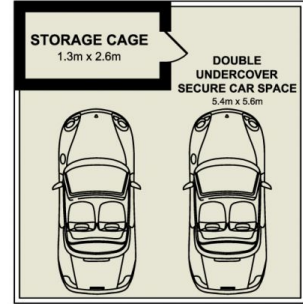
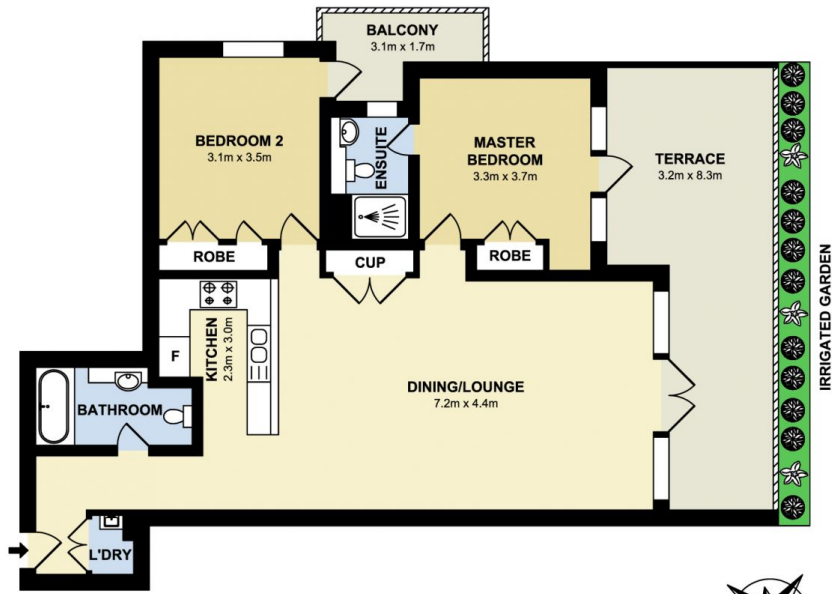
**Konstantin Melnikov**

📞 0421 540 424  
 ✉ konstantin@morton.com.au

**Ferenc Goemoeri**

📞 0447 025 423  
 ✉ ferenc@morton.com.au

**morton.com.au**



**morton.**

Crows Nest 53/236 Pacific Highway