



morton.

Wentworth Point D13065/7 Bennelong Parkway

2
 1
 1

This spacious open plan layout two bedroom is quietly located in 'One the Waterfront'. Contemporary luxurious interiors design offers relaxed and sweet home living experience. convenient location can easy access to various eateries, shops, public transportation, and free Baylink Shuttle Bus directly to Marina Square shopping centre and Rhodes train station.

- A wide enclosed winter garden that flows easily off the living space.
- positioned within an immaculate security building
- Smartly appointed kitchen with stone benches and gas fittings
- Two bedrooms include a large main that opens onto the winter garden
- Basement car parking with storage cage, lift access and intercom entry
- Access to the Pulse Club swimming pools, gym and tennis courts

morton.com.au

View

As advertised or by appointment

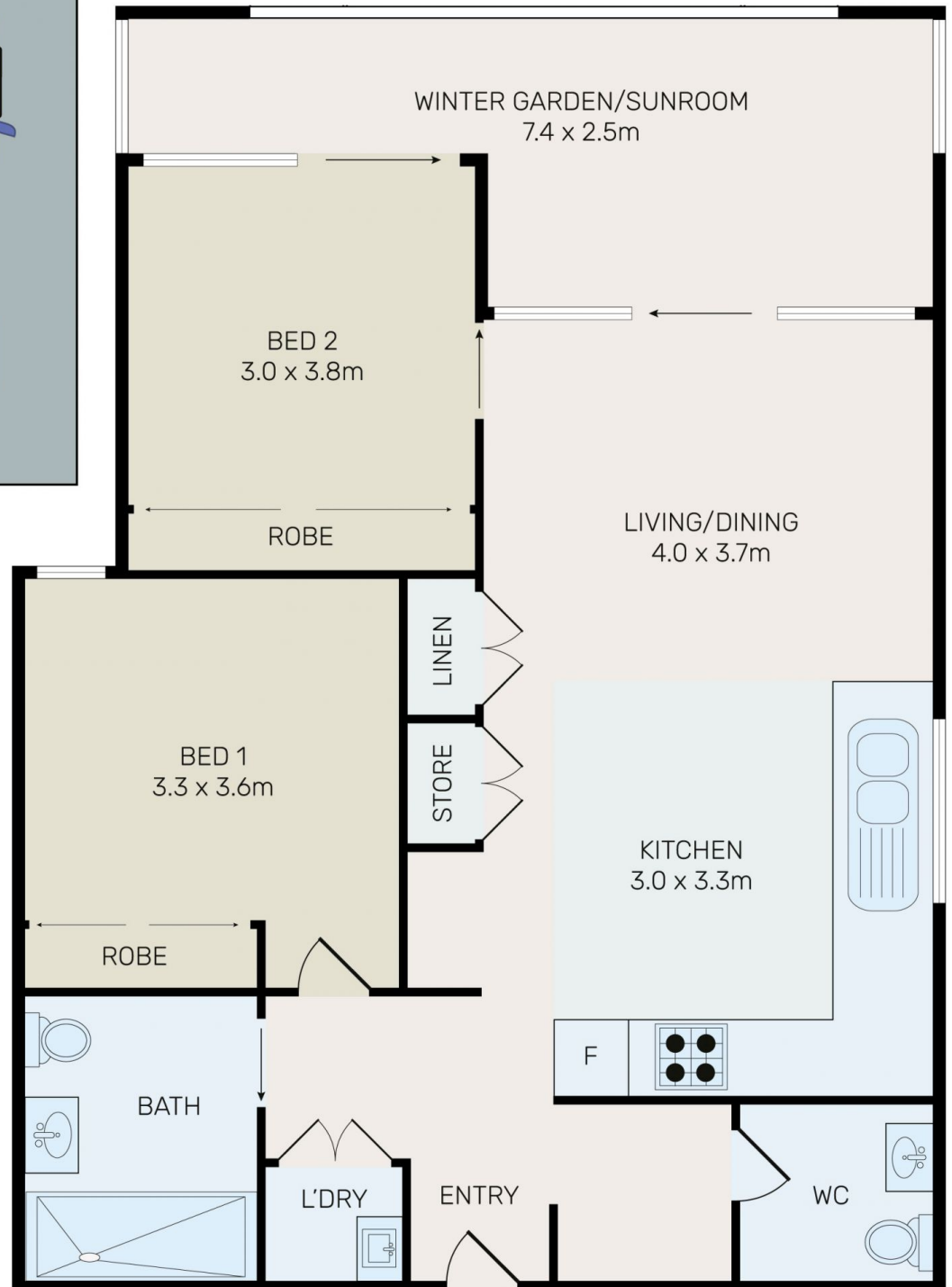
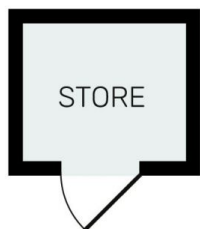
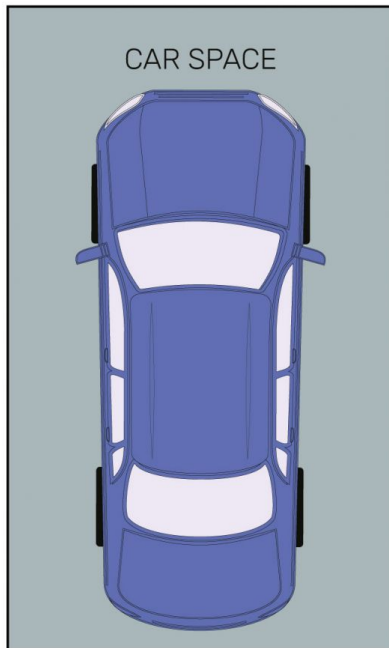
Agents

Vivian Zhang

0447 964 200
 vivian@morton.com.au

Dylan Choe

0416 932 977
 dylanchoe@morton.com.au



All information contained herein is gathered from all sources we believe to be reliable. However we cannot guarantee its accuracy and interested parties should rely on their own enquiries.



D13065/7 Bennelong Parkway, Wentworth Point