



morton.

Cremorne 21/1-7 Hampden Avenue

 1  1  1

Ideally located within the highly sought after 'Peppertrees' complex, this one bedroom Mirvac apartment offers a perfect blend of space, light and privacy. Located on the top floor with a spacious open plan layout, this residence ticks all the boxes for immediate lifestyle enjoyment featuring fresh airy interiors, large proportions and great natural light throughout.

- Envious open plan living and dining layout with generous proportions
- Spacious interiors perfectly positioned to capitalise on natural light
- Expansive full length balcony perfect for entertaining
- Spacious bedroom with built in robe
- Ideally positioned on the top floor of the complex with a leafy outlook
- Fully tiled bathroom with large vanity
- Lock up garage with additional room for storage
- Security building, intercom access, visitor parking and well maintained gardens and communal areas

View



As advertised or by appointment

Agents

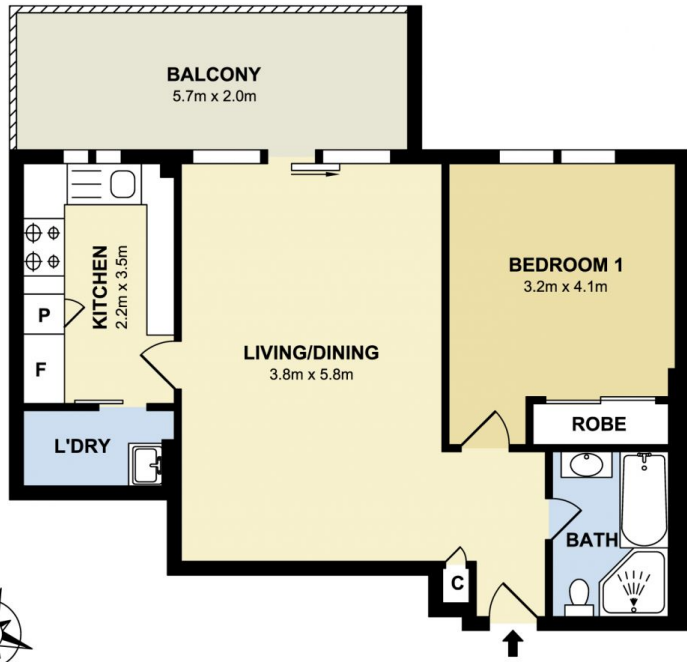
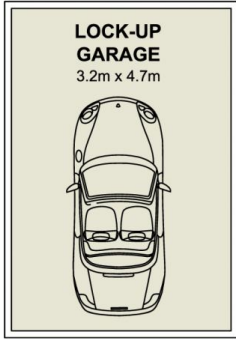
Konstantin Melnikov

 0421 540 424
 konstantin@morton.com.au

Ferenc Goemoeri

 0447 025 423
 ferenc@morton.com.au

morton.com.au



morton.

Cremorne 21/1-7 Hampden Avenue