



morton.

Penrith 616/26A Lord Sheffield Circuit

 2  2  1

Lumina is an exciting precinct perfectly positioned within Penrith's emerging urban centre - a vibrant community to suit everyone and every lifestyle. A short walk leads you to Westfield's shops and entertainment and Penrith's famed dining precinct. Convenient transport and excellent schools are close by, as well as stunning parklands; from Ron Mulock Oval through to the Nepean River and the foothills of the Blue Mountains. Within the precinct you will find cafes ready to brew your morning coffee as you prepare for a day of work or a weekend family outing.

- Largest internal size for a 2-bed in the building
- Ducted air con throughout with floorboards to living and carpet to bedrooms
- Integrated fridge and freezer to the well-appointed kitchen
- Large north facing balcony with views to the surrounding area and Mountains
- Large master bedroom with ensuite and built in wardrobes
- Storage cage and car space to basement
- On-site building manager. pet friendly building with 5



morton.com.au

View



As advertised or by appointment

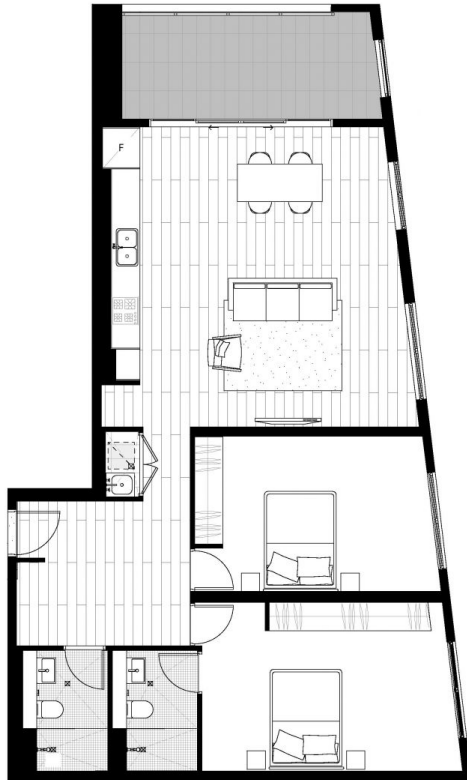
Agents

David Lipman

 0409 663 535
 david@morton.com.au

SJ Singh

 0417 085 519
 sj.singh@morton.com.au



LUMINA

SHEFFIELD QUARTER

THORNTON

TWO BEDROOM
APARTMENT

UNIT 616

INTERNAL AREA	95 m ²
EXTERNAL AREA	12 m ²

TOTAL	107 m ²
-------	--------------------

PARKING	1
---------	---



NORTH

URBAN

This floor plan has been prepared for marketing purposes only. All descriptions, dimensions, depictions and other details in this floor plan may not be to scale and may vary from the property as built. Your attention is drawn to the special conditions of the contract for sale of land. No third party has any authority to make or give any representation or warranty in relation to the property unless the representation or warranty is confirmed by Developer and included in the contract for sale of land.