





morton.

Crows Nest 117/402-420 Pacific Highway

 1  1

Located in the sought after Atrium building, this renovated one bedroom apartment is ideally located within a short stroll to city transport links as well as Willoughby Road's vibrant cafes and eateries. Showcasing a spectacularly verdant and sunny outlook away from the highway with peaceful surrounds.

- Bedroom with mirrored built-in wardrobe
- Modern tiled bathroom with separate tub
- New gas kitchen with ample storage and stainless steel appliances
- Internal laundry with washer/dryer included
- Security building includes pool, gym, spa and sauna
- Rooftop terrace
- Close to all transport, shops and cafes


View

As advertised or by appointment

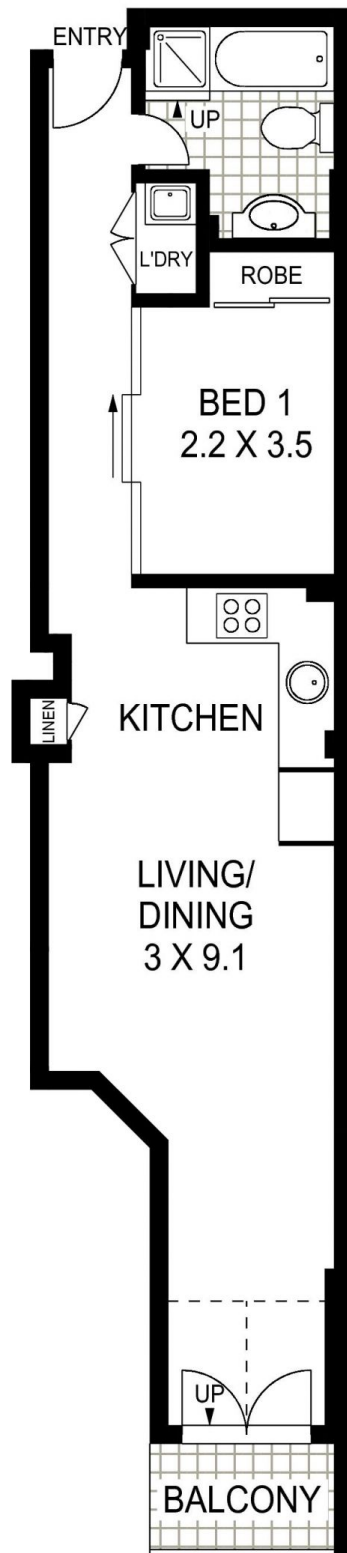
Agent

Joseph Youll

 0410 593 248

 joseph.youll@morton.com.au

morton.com.au



APPROX : GROSS INTERNAL AREA :- 42 SQM



LEVEL ONE

117/ 402-420 PACIFIC HIGHWAY

CROWS NEST

Floor Plan Disclaimer: Mind the Gap (mtg) floor plans / site plans are intended as a guide only. No representations or warranties of any nature whatsoever are given or intended and any person using this information should always rely on their own enquiries. mtg property marketing services - 1300 133 145 - photography, floor plans, virtual tours, video tours, copywriting, project marketing - www.mindthegap.com.au