



morton.

Pyrmont 203/15 Pirrama Road

 3  2  2

View

As advertised or by appointment

Agent

James Crow

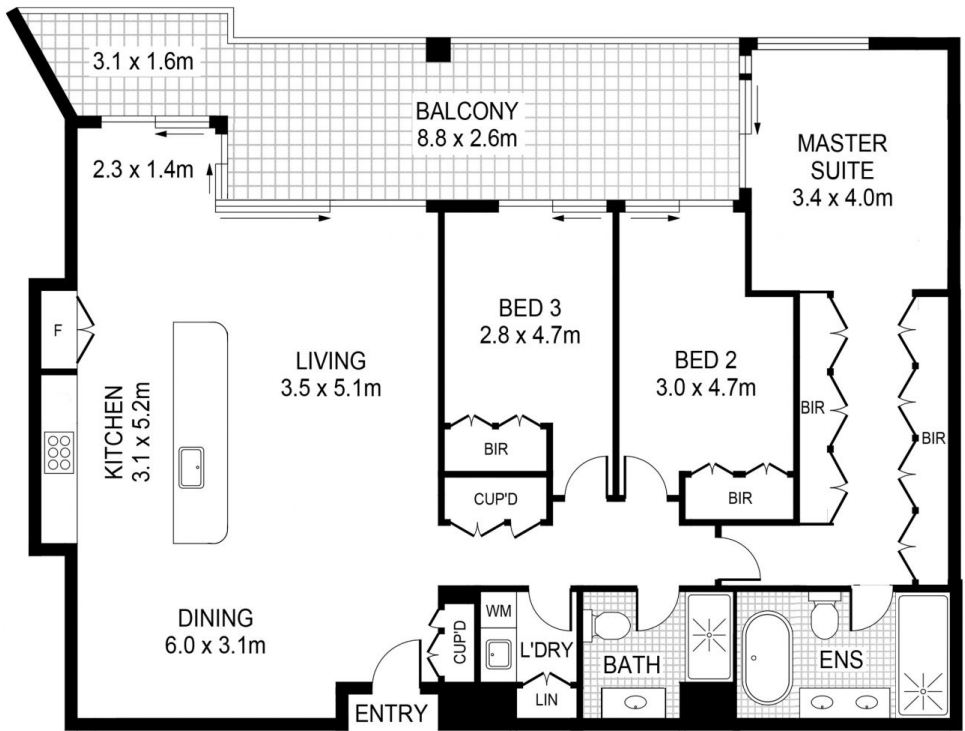
 0410 593 057

 james@morton.com.au

Occupying a prized position in 'The Promontory', one of Pyrmont's most exclusive harbourside offerings, this exceptional residence has undergone a contemporary transformation. Flooded with the streaming light of a north eastern aspect complemented by views that stretch across sparkling harbour vista's, parks and marine inspired heritage finger wharves.

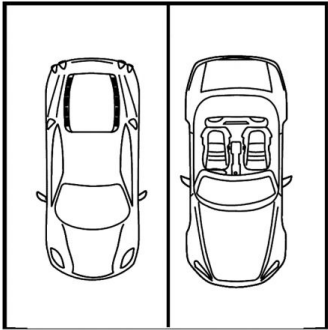
- Newley renovated, impeccably finished with attention to detail
- Intuitively crafted for seamless indoor/outdoor living
- Opulent open plan living, high ceilings add to space and light
- Formal, informal and breakfast dining with a harbour backdrop
- Expansive balcony is accessed from living and all bedrooms
- Bespoke integrated kitchen, wine fridge, stainless appliances
- New hardwood floors, air conditioning, full laundry
- Indoor pool, gym, sauna, spa, excellent internal storage
- Secure side by side parking, storage and visitor parking

morton.com.au



STORAGE
CAGE
3 sqm

Total Car Spaces 28 sqm



This floor plan including furniture, fixture measurements and dimensions are approximate and for illustrative purposes only.



PYRMONT 203/11-15 Pirrama Road

morton.