



morton.

Penrith 2/26C Lord Sheffield Circuit

🛏 3 🚿 2 🚗 2

In one of the most appealing buildings in Thornton is this perfect three-bedroom unit, suitable for downsizers and families. With its large size and layout, coupled with the space and courtyard access, this makes the ideal choice when seeking low-maintenance lifestyle living.

- Featuring 143sqm of inside/outside living and covered courtyard
- Huge internal size, perfect layout with study nook
- Blinds and ducted air conditioning throughout
- Master bedroom with ensuite, built in robes and access to courtyard
- Second and third bedrooms both have access to courtyard
- Large internal laundry with dryer, space for large walk-in pantry also
- Stylish modern kitchen complete with quality appliances
- Floorboards to the living areas and carpet to the bedrooms
- Bicycle hub, communal BBQ area, herb garden and on-site building manager

View

As advertised or by appointment

Agents

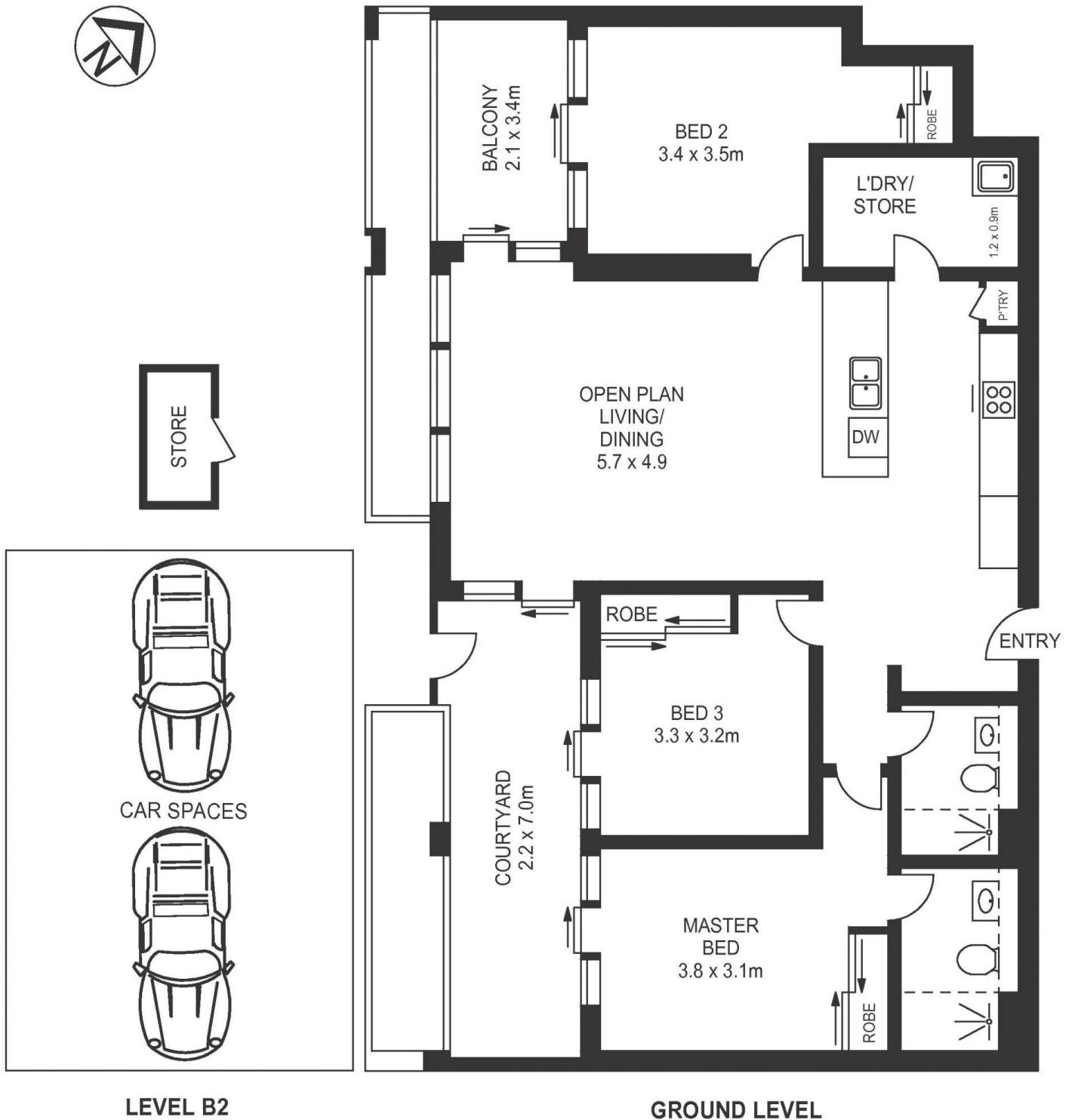
David Lipman

📞 0409 663 535
✉ david@morton.com.au

SJ Singh

📞 0417 085 519
✉ sj.singh@morton.com.au

morton.com.au



APPROX. INT. AREA : 122 m²
APPROX. EXT. AREA : 21m²
TOTAL AREA INCLUDING CAR SPACES,BALCONY,COURTYARD AND STORE : 169 m²

2/26C LORD SHEFFIELD CIRCUIT, PENRITH

