



**morton.**

**Penrith** 920/1-39 Lord Sheffield Circuit

 2  2  1

For those on the lookout for a superb lifestyle and location package, this well-proportioned security apartment offers a great urban home. Smartly designed to give it a fresh modern feel, featuring a bright and low-maintenance layout. All this and a top location in Thornton Estate's sought-after Harts Landing building that is literally footsteps to the heart of Penrith.

- Top floor north facing apartment with beautiful views of the Blue Mountains
- Split system air con in the living room, timber-look porcelain tiles in living
- Open-plan living and dining with balcony off the living area
- Carpet to both bedrooms and walk in robes and ensuite to the master
- Large island bench in kitchen with Omega appliances including dishwasher
- NBN ready, Data/TV/PayTV points in the living & bedroom
- Secure car space and storage cage in the basement, lift access to your level


**morton.com.au**

**View**

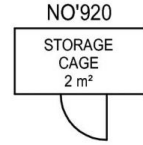
As advertised or by appointment

**Agent**

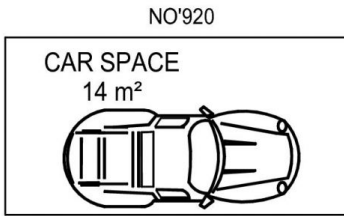
**Anthony Fleming**

 0437 929 484

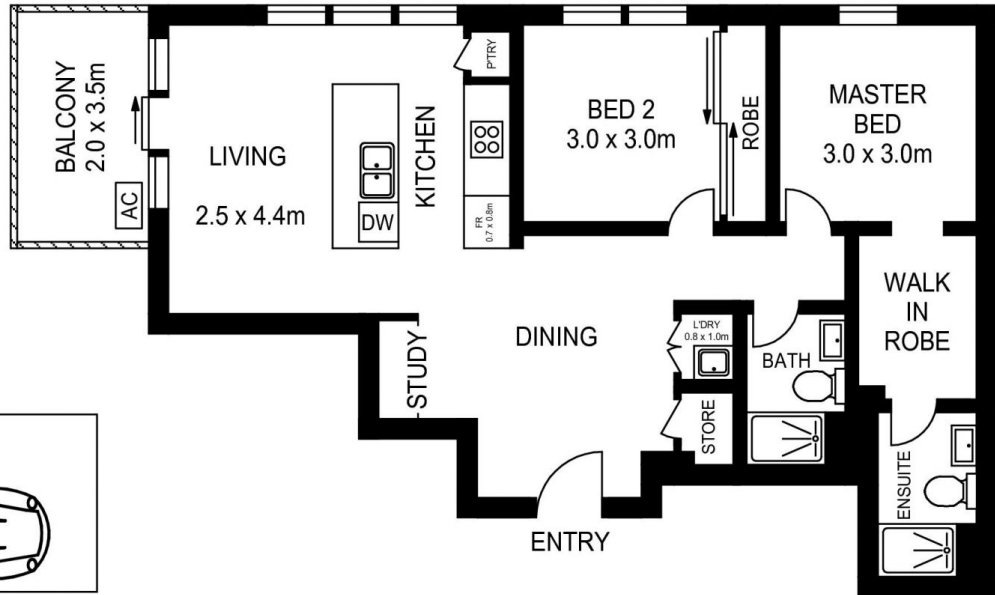
 [anthonyf@morton.com.au](mailto:anthonyf@morton.com.au)



**BASEMENT**



**BASEMENT**



**LEVEL NINE**

APPROX. INT. AREA : 72 m<sup>2</sup>  
 APPROX. EXT. AREA : 7 m<sup>2</sup>  
 TOTAL AREA INCLUDING CAR SPACE AND STORAGE CAGE : 95 m<sup>2</sup>

### D920/1-39 LORD SHEFFIELD CIRCUIT, PENRITH



[www.assetphotographers.com.au](http://www.assetphotographers.com.au)

Please note these measurements are approximate only. The plans is intended as a rough guide for illustrative purpose. It is not warranted or guaranteed to be correct nor it is part of the sale or rental contract