



morton.

Penrith 803/91 Lord Sheffield Circuit

 1  1  1

The Henry is a small boutique residence of just 48 stylish apartments, presenting a new standard of contemporary living in Penrith. Situated within Thornton Estate and designed with luxury in mind, it promotes the best of urban living, surrounded by the space and calm of Sydney's greater west. There's a desire for modern comfort, convenience and time to relax and enjoy the beauty that surrounds you. An easy commute to work, amenities at your doorstep and the Nepean River or Blue Mountains a short drive away.

- Fresh and airy open design with timber flooring throughout
- Good sized bedroom with built-ins plus a study nook
- Dual-zone, ducted air con and remote control blinds throughout
- Covered balcony with panoramic views of the picturesque Blue Mountains
- Stylish eat-in gas kitchen, integrated fridge, microwave, dishwasher
- Well-proportioned designer bathroom plus internal laundry and dryer



morton.com.au

View



As advertised or by appointment

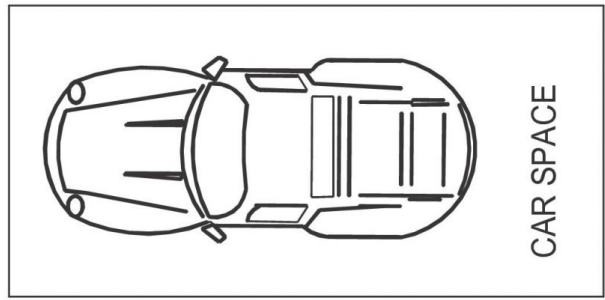
Agents

David Lipman

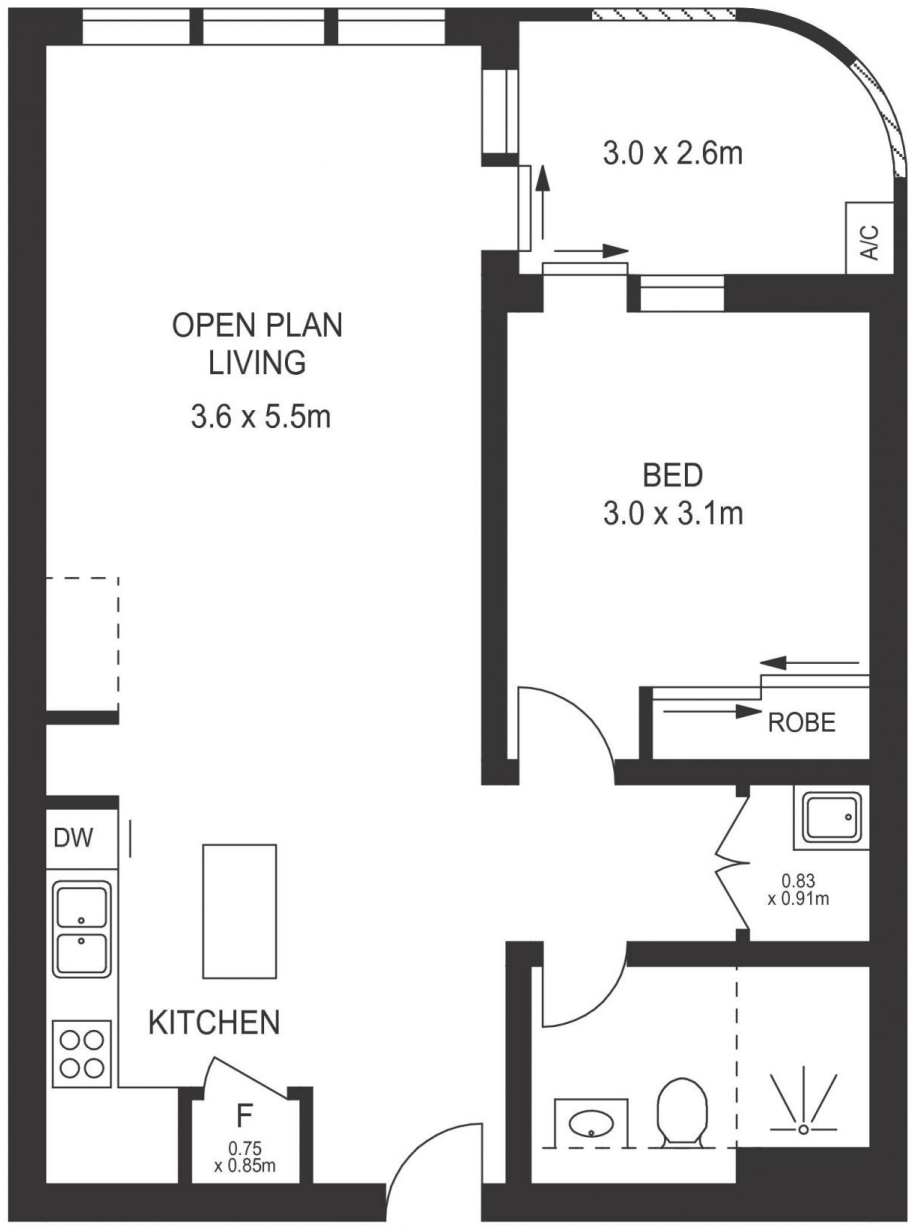
 0409 663 535
 david@morton.com.au

SJ Singh

 0417 085 519
 sj.singh@morton.com.au



LEVEL TWO



LEVEL EIGHT

APPROX. INT. AREA : 57 m²
 APPROX. EXT. AREA : 7 m²
 TOTAL AREA : 78 m²

803-91 LORD SHEFFIELD CIRCUIT, PENRITH



Please note these measurements are approximate only. The plans is intended as a rough guide for illustrative purpose. It is not warranted or guaranteed to be correct nor it is part of the sale or rental contract