



# morton.

**Haymarket** 244/420-426 Pitt Street



Situated on the 24th floor, this spacious and bright one bedroom apartment offers floor to ceiling windows, open plan living and dining area and a generously sized balcony with the views over Belmore Park and a heritage façade of central station. An independent contemporary kitchen area maximises the living space. Spacious modern bathroom offers a full size bath as well as a separate shower. Storage is plentiful with three built-in cupboards in the living area, a generous built-in wardrobe in the bedroom, and a large storage cage in the car park of the building.

- A light filled generously sized open plan layout with balcony
- Internal laundry room and additional lock-up storage cage
- Freshly painted throughout and featuring hybrid flooring
- Modern kitchen with stainless steel appliances, stone benchtop, gas fittings
- Secure lift access, a fully equipped gym, on-site building manager
- Solid investment prospect in an area with strong rental demand

[morton.com.au](https://morton.com.au)

### View

As advertised or by appointment

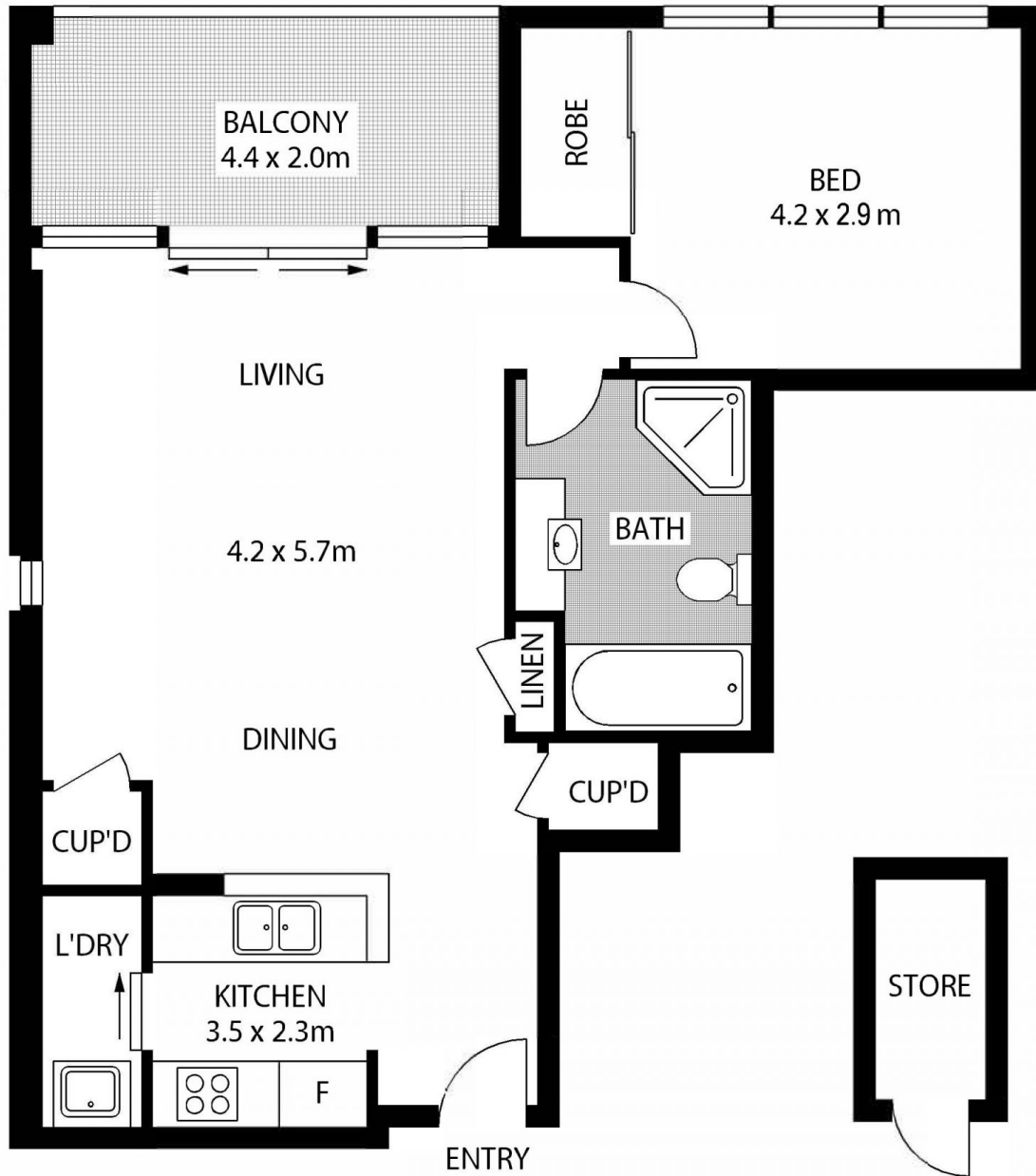
### Agents

#### Ettiene West

- 📞 0410 593 749
- ✉️ [ettiene@morton.com.au](mailto:ettiene@morton.com.au)

#### Arta Kains

- 📞 0438 418 229
- ✉️ [arta@morton.com.au](mailto:arta@morton.com.au)



**LEVEL 24**



244/420 PITT STREET

SYDNEY

SCAPE Floor Planning Disclaimer: This floor plan is conceptual only. It is provided for illustrative purposes only and should not be relied upon. We make no guarantee as to the correctness of this plan. All interested parties should make and rely on their own enquiries in determining the accuracy of the information contained in this floor plan.