



morton.

Riverwood 605/7 Washington Avenue

 2  2  1

Enjoy the best of relaxed community living in this spacious apartment in the acclaimed Washington Park lifestyle precinct that's surrounded by a range of amenities and attractions. What sets this modern residence apart from a traditional two-bedroom apartment is its fluid indoor-outdoor design and clever layout that has bedrooms at opposite ends of the floorplan.



- An elevated aspect with tree-filled outlooks over the district
- Open living space has separate areas for lounge and dining
- Easy flow to a wide entertainment balcony with leafy views
- Stylish modern kitchen with stone benches and s/steel fittings
- Two double bedrooms with built-ins, the main has an ensuite
- Air-conditioning, intercom, lift access and a security car space
- Set in the Como complex with gardens, seating and play areas

View



As advertised or by appointment

Agents

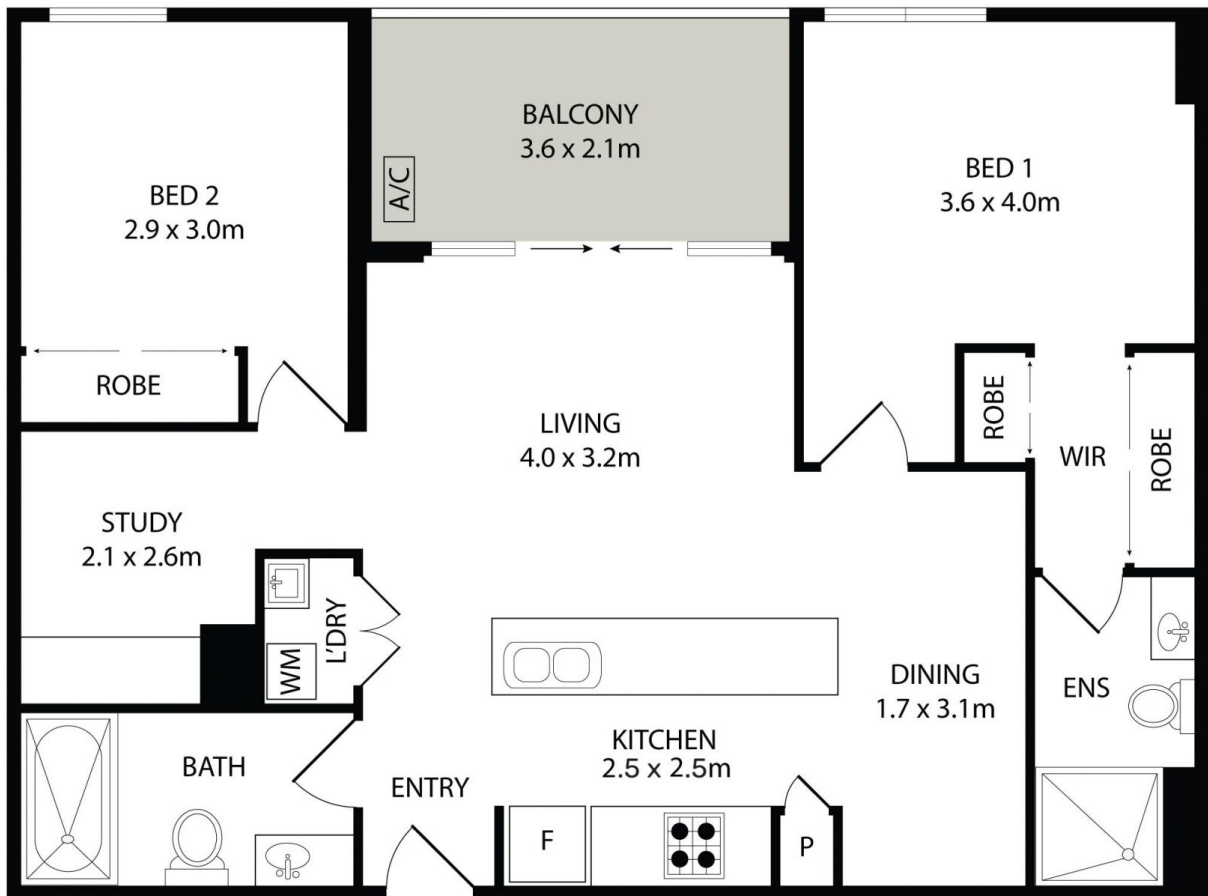
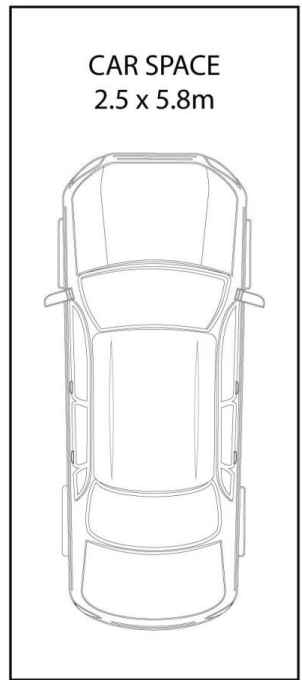
Vivian Zhang

 0447 964 200
 vivian@morton.com.au

Nada Fayad

 0408 376 995
 nada.fayad@morton.com.au

morton.com.au



All information contained herein is gathered from all sources we believe to be reliable. However we cannot guarantee its accuracy and interested parties should rely on their own enquiries.



605/7 Washington Avenue, Riverwood