



morton.

Glebe 49/37-43 Bay Street

🛏 1 🚗 1 🚗 1

This is a unique residence, the ultimate city pad, featuring a stand-alone design with no common walls and a large entertainer's terrace offering captivating city skyline views.

- Spacious bedroom with built-in wardrobe opens onto a private courtyard
- Impeccably presented unit with secure undercover parking
- Sunlit top floor with privacy and no shared walls
- Kitchen featuring Caesar stone countertops, stainless steel gas appliances
- Air-conditioning, security intercom
- Elegant floorboards, concealed laundry
- Recent upgrades include: updated bathroom vanity, kitchen cabinetry restoration, bathroom grouting, updated light switches
- Expansive common area rooftop terrace offering breathtaking city and local views
- Currently tenanted for \$600 per week (Expiry: July 2024)

View

As advertised or by appointment

Agents

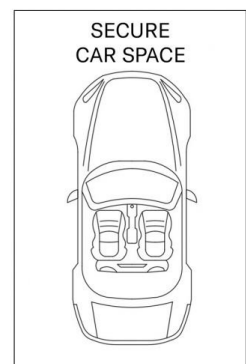
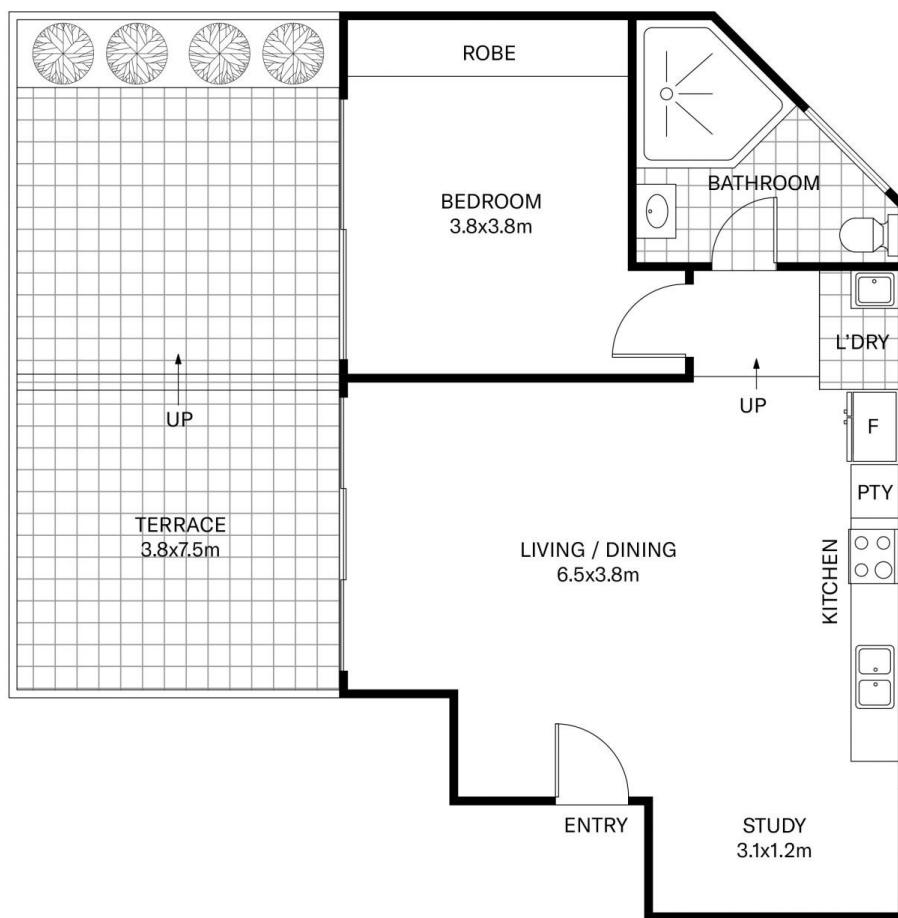
Ian Qiu

📞 0447 696 425
✉ ian@morton.com.au

Naomie Texier

📞 0439 247 710
✉ naomie@morton.com.au

morton.com.au



49/37 Bay Street

Glebe

SCAPE Floor Planing Disclaimer: This floor plan is conceptual only. It is provided for illustrative purposes only and should not be relied upon. We make no quarantees to the correctness of this plan. All interested parties should make and rely on their own enquiries in determining the accuracy of the information contained in this floor plan.