

402/8 Park Lane, Chippendale

morton.

Chippendale 402/8 Park Lane

1 1

This luxury apartment exudes a perfect balance of aesthetics, practicality, warmth and clean minimalism. Featuring fresh modern interiors and a superb position, this Central Park apartment holds enormous appeal for both buyers and investors. Move straight in and enjoy a lifestyle of supreme convenience within footsteps to a variety of excellent eateries, transport and amenities.

- Stand alone apartment with no common walls
- Currently tenanted for \$720 per week (periodic) Vacant possession available upon settlement if required.
- Living and dining flows easily to a large enclosed balcony
- Stylish contemporary kitchen with quality appliances
- Large bedroom, custom built-in wardrobe, ducted air conditioning
- Ultra modern bathroom with internal laundry facilities
- 2sqm lock up storage cage
- Building facilities include gymnasium and pool
- Exceptional investment property in a sought-after setting
- Stroll to Sydney Uni, UTS, buses/trains, cafes, restaurants

View

As advertised or by appointment

Agents

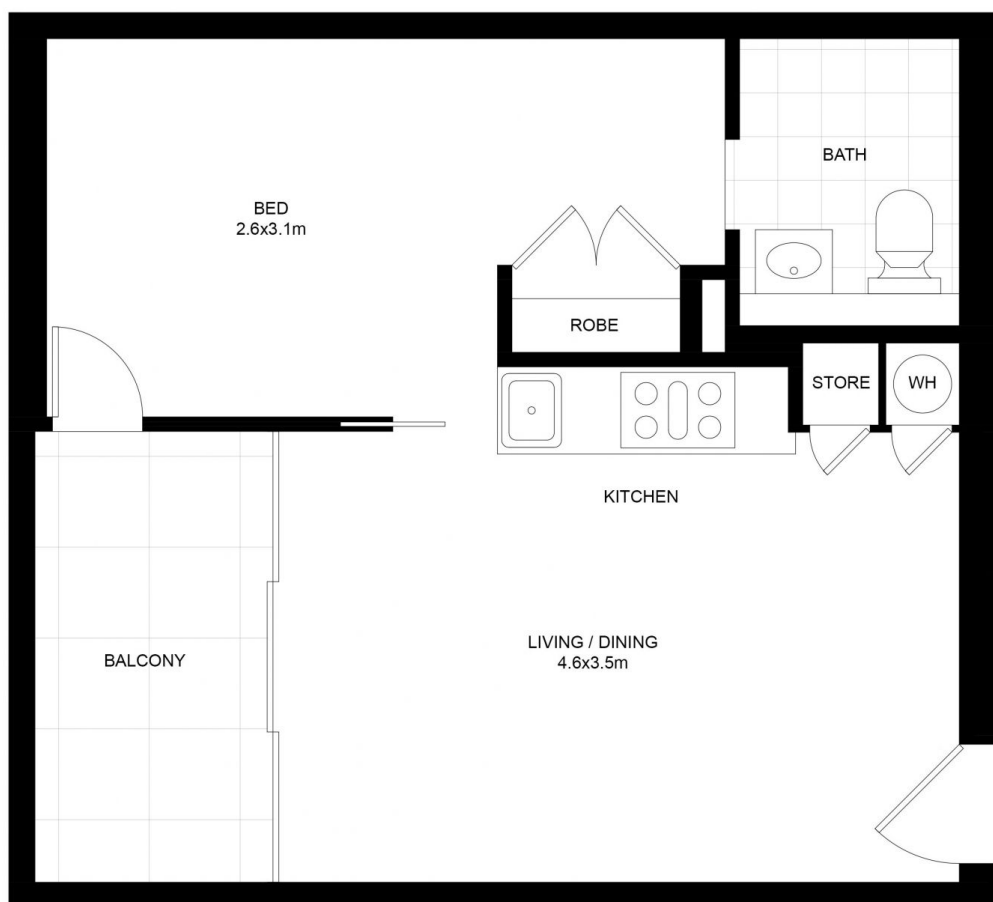
Ian Qiu

0447 696 425
ian@morton.com.au

Naomie Texier

0439 247 710
naomie@morton.com.au

morton.com.au



402/8 Park Lane,

Chippendale

SCAPE Floor Planing Disclaimer: This floor plan is conceptual only. It is provided for illustrative purposes only and should not be relied upon. We make no guarantees to the correctness of this plan. All interested parties should make and rely on their own enquiries in determining the accuracy of the information contained in this floor plan.