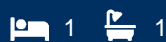


**morton.**

**Sydney** C605/15 Young Street



Crafted by the acclaimed SJB Architects, this executive 91 sqm one-bedroom apartment in the prestigious 'Loftus Lane' development boasts a sophisticated two-story design. Illuminated by expansive 5-meter double-height windows, the open-plan living area is flooded with natural light. With its architectural finesse and functional layout, this apartment offers both style and practicality for discerning residents.

- Premium quality finishes throughout with custom joinery
- Two storey floorplan with 5 metre ceiling in living area
- Deluxe open plan living area and kitchen with Miele appliances
- A built-in designated study area with ample storage
- 14 sqm deluxe entertainer's dream terrace
- Separate secure basement 3sqm storage cage
- Video intercom, ducted aircon, separate powder room
- Dual building entry for convenience, lift access and concierge
- Footsteps to Botanical Gardens, Circular Quay and more
- Abundant transport options, laneways with restaurants &

**morton.com.au**

#### **View**

As advertised or by appointment

#### **Agents**

##### **Ettiene West**

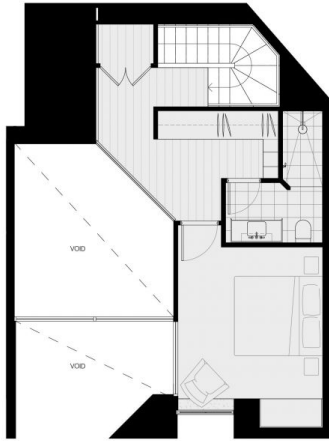
- 📞 0410 593 749
- ✉ ettiene@morton.com.au

##### **Arman Zounuzy**

- 📞 0410 539 793
- ✉ arman.zounuzy@morton.com.au

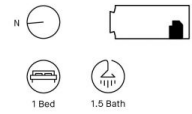


Lower Level



Upper Level

15 Young Street  
Unit C.06.05



loftuslane.com.au  
1800 316 505