



morton.

Zetland 1801/6 Ebsworth Street

 2  2  1

This luxurious apartment within Mirvac's iconic OVO development offers a stunning home with its signature curved walls, quality design and panoramic views to the city skyline throughout. Set high on the 18th floor, it is light filled throughout and finished to the highest standard. Nestled within the vibrant Green Square Town Centre it offers excellent convenience with access to the CBD and airport just minutes away.

- Crisp, fresh and open interiors with expansive views
- Floor-to-ceiling windows maximise natural light and air ventilation
- Two double bedrooms at opposite ends of the floorplan, master with ensuite
- Modern kitchen with sleek finishes and quality European appliances
- Two designer bathrooms, air-conditioning
- Car Space
- Storage Cage

View



As advertised or by appointment

Agents

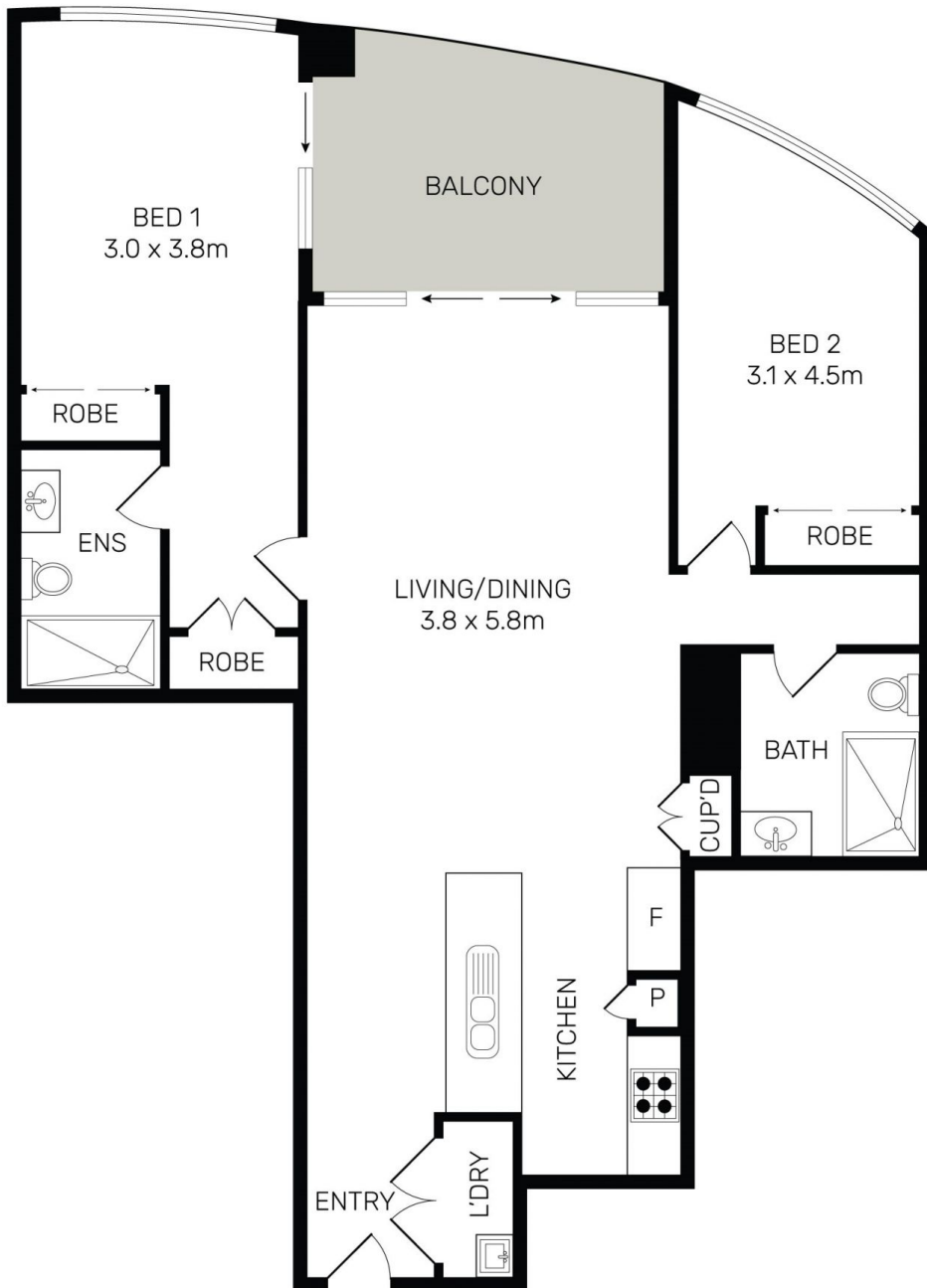
Calvin Chan

 0406 888 028
 calvin@morton.com.au

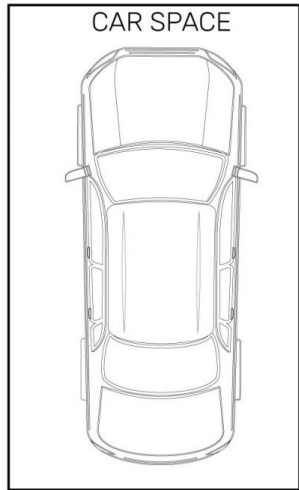
Jackson Figueiras

 0448 764 345
 jackson@morton.com.au

morton.com.au



Storage
Cage



All information contained herein is gathered from all sources we believe to be reliable. However we cannot guarantee its accuracy and interested parties should rely on their own enquiries.

1801/2 Ebsworth Street, Zetland