



morton.

Woolloomooloo 126/6 Cowper Wharf Roadway



This beautifully appointed one-bedroom apartment offers a rare opportunity to live in a historic landmark with a modern twist. Wake up to panoramic eastern views over the bay towards Potts Point. Enjoy a morning coffee on your private deck and relish the convenience of inner-city waterfront living with private access to the residents only promenade.

The open-plan living and dining area create a sense of space and light, while the well equipped kitchen is perfect for both everyday living and entertaining. The bedroom is a tranquil retreat with ample storage space in the built-in wardrobe.

- Open plan living/dining
- Bedroom with dual access ensuite
- Internal Laundry, timber floors
- Renovated bathroom
- Reverse cycle aircon, intercom access
- Secure parking in Lincoln Crescent
- 24 hour on site security

View

As advertised or by appointment

Agents

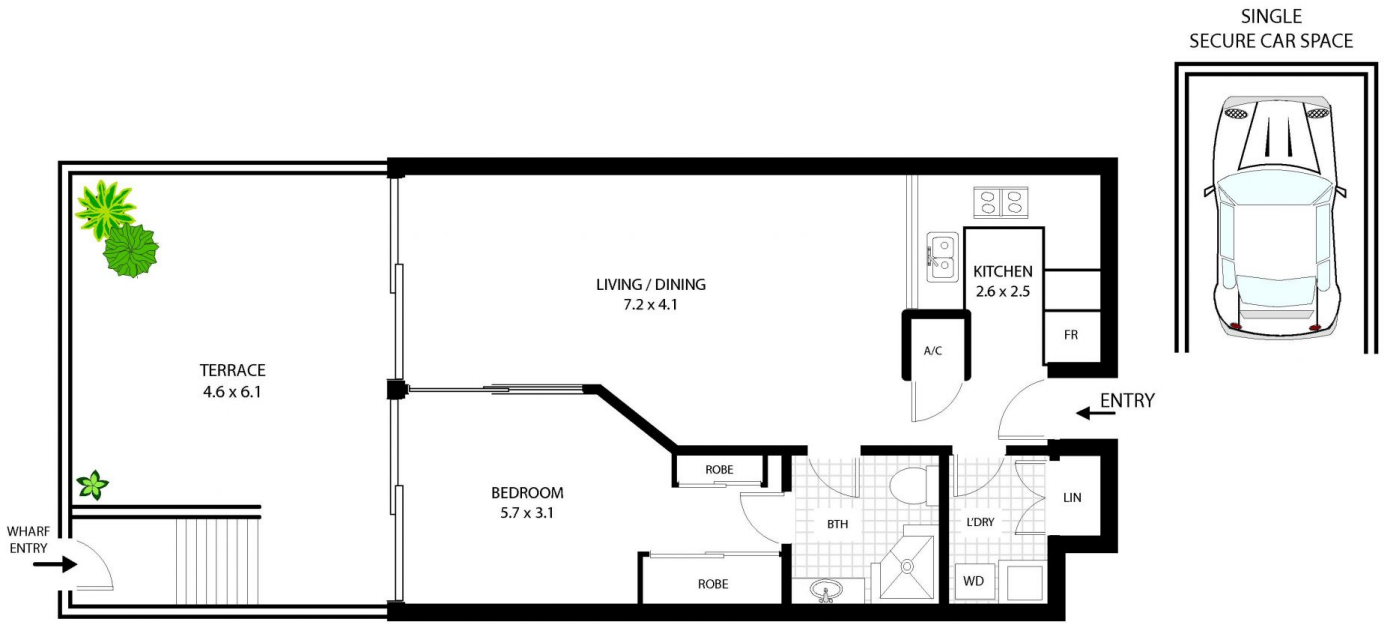
Noel Jenkins

- ☎ 0410 593 694
- ✉ noel@morton.com.au

Christian Postiglione

- ☎ 0400 074 525
- ✉ christian.postiglione@morton.com.au

morton.com.au



126/6 Cowper Wharf Rd, Woolloomooloo

All measurements are approximate only. Plan is provided as an indication of layout

