



morton.

Pyrmont 255/3 Darling Island Road

 3  2  2

Located on Darling Island's exclusive harbourside peninsula, this opulent penthouse apartment will suit those seeking space, privacy and exceptional finishes. Positioned on the water's edge and spanning across the entire floor, this apartment enjoys Harbour Bridge and Barangaroo views and takes in Pyrmont's historic finger wharves.

- Palatial lounge and dining with soaring pitched ceilings
- Opens to large balcony suited to indoor/outdoor living
- Additional balcony off bedrooms with bridge/city views
- Exclusive rooftop with 360 degree Sydney harbour views
- Flooded with natural light. Generous internal storage
- Designer Miele kitchen, stone benchtops and dual skylights
- King sized bedrooms, dressing rooms and balcony access
- Superbly crafted bathrooms, both bedrooms with ensuites
- Air conditioning, smart-home tech and remote sunscreens
- Direct lift access. Entry lobby shared with sole neighbour only
- Building security, secure parking + storage cage
- Concierge service, 20 metre pool, gym, spa and sauna

View

As advertised or by appointment

Agents

Cesar Rojas Soto

 0407 547 996

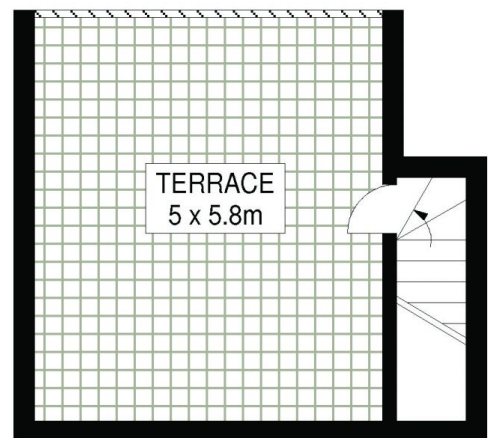
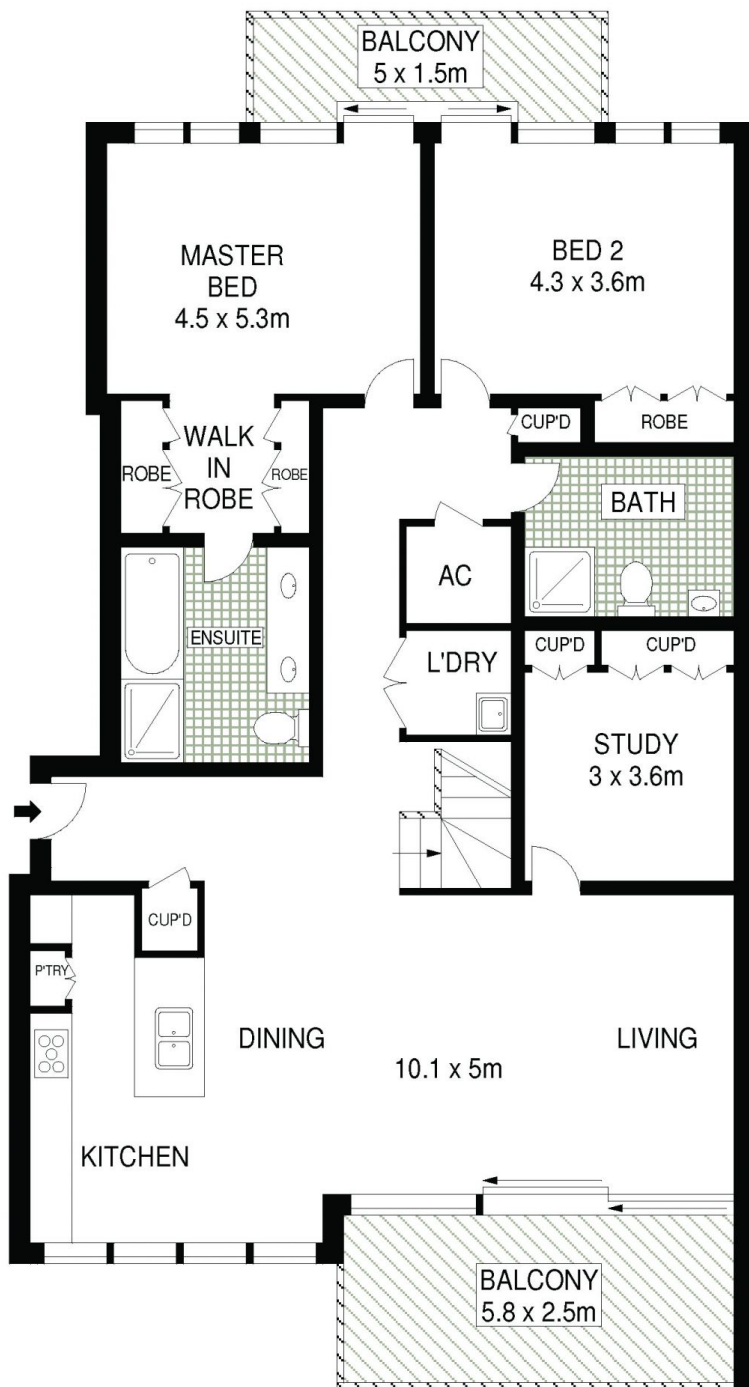
 cesar.rojas-soto@morton.com.au

James Crow

 0410 593 057

 james@morton.com.au

morton.com.au



UPPER LEVEL

LEVEL FIVE



257/3 DARLING ISLAND ROAD
DARLING ISLAND



ALL INFORMATION CONTAINED HEREIN IS GATHERED FROM SOURCES WE BELIEVE TO BE RELIABLE. HOWEVER WE CANNOT GUARANTEE ITS ACCURACY AND INTERESTED PERSONS SHOULD RELY ON THEIR OWN ENQUIRIES. DIMENSIONS ARE APPROXIMATE