



morton.

Haymarket 260/398-408 Pitt Street

🛏 2 🚿 1 🚗 1

Effortless living awaits in this stylish residence, strategically located for easy access to diverse culinary and shopping delights. Meticulously designed spacious open plan living, dining and kitchen, this contemporary home offers low-maintenance living. Positioned on the sub-penthouse level on floor 37, it offers spectacular views of the city.

- Open entertaining areas seamlessly connect to a welcoming balcony
- Sunlit interiors throughout; internal laundry; separate bath and shower
- Generously sized bedrooms both with built-in wardrobes
- Well-equipped open kitchen with electric appliances; ample storage
- Amenities: indoor heated pool, gym, sauna, spa, squash court, games room, BBQ area
- Additional features: concierge; oversized 18sqm lock-up garage with storage space
- Ducted air conditioning; halogen lighting; and intercom system

morton.com.au

View

As advertised or by appointment

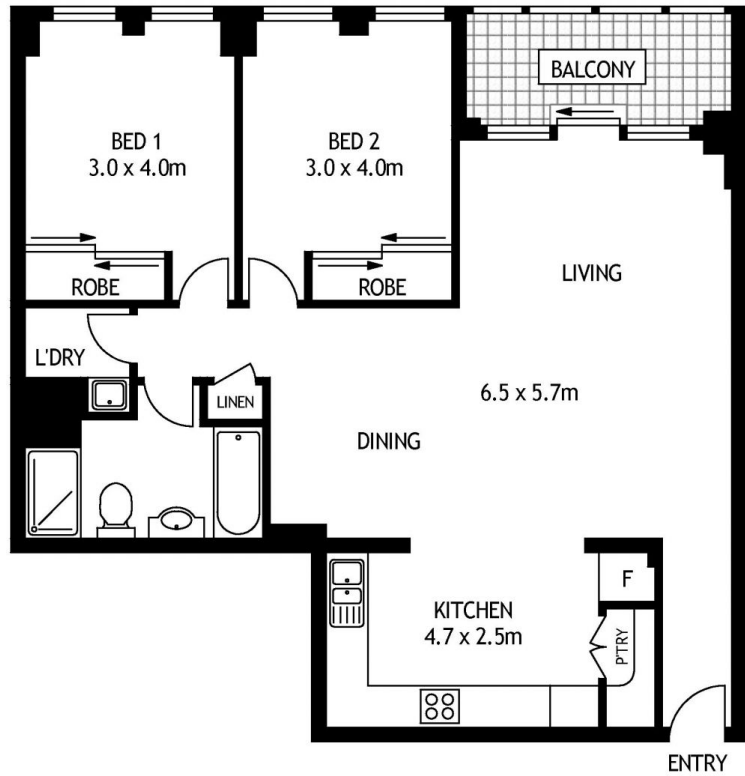
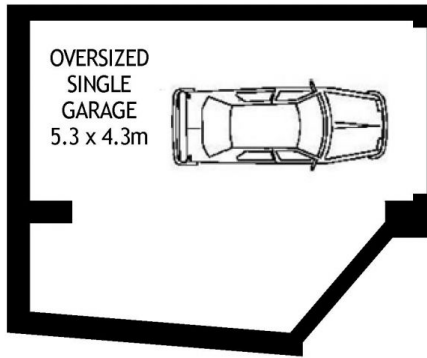
Agents

Ettiene West

📞 0410 593 749
✉ ettiene@morton.com.au

Arta Kains

📞 0438 418 229
✉ arta@morton.com.au



THIRTY SEVENTH FLOOR

260/398 PITT STREET

SYDNEY

SCAPE Floor Planing Disclaimer: This floor plan is conceptual only. it is provided for illustrative purposes only and should not be relied upon. We make no guarantees to the correctness of this plan. All interested parties should make and rely on their own enquiries in determining the accuracy of the information contained in this floor plan.