



morton.

Sydney 94/289 Sussex Street

🛏 2 🚿 2 🚗 2

Poised on the 15th level of the iconic Millennium Towers in the heart of Sydney's dynamic central district, this exceptional apartment promises a generously designed space for living or investment. The sturdy full brick construction ensures durability while providing lift access to all levels. Revel in the apartment's north-east facing orientation, inviting an abundance of natural light to illuminate the living spaces.

- Expansive open-plan living and dining area seamlessly blends with a well-appointed separate kitchen
- Luxurious ensuite bathroom featuring both a separate shower and a relaxing bath
- Internal laundry facilities and thoughtfully integrated built-in cupboards
- Tandem parking space spanning 40 sqm with an additional 13 sqm storage area
- Full brick construction ensuring enduring strength, with convenient lift access to all levels
- 24-hour concierge service and secure intercom entry provide unparalleled peace of mind

morton.com.au

View

As advertised or by appointment

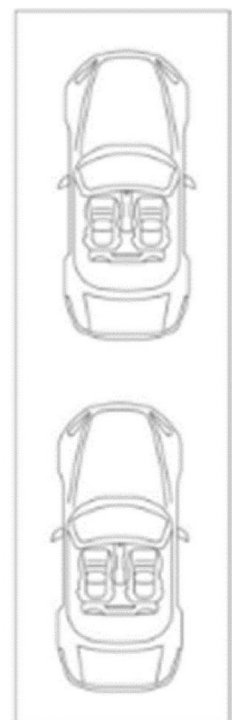
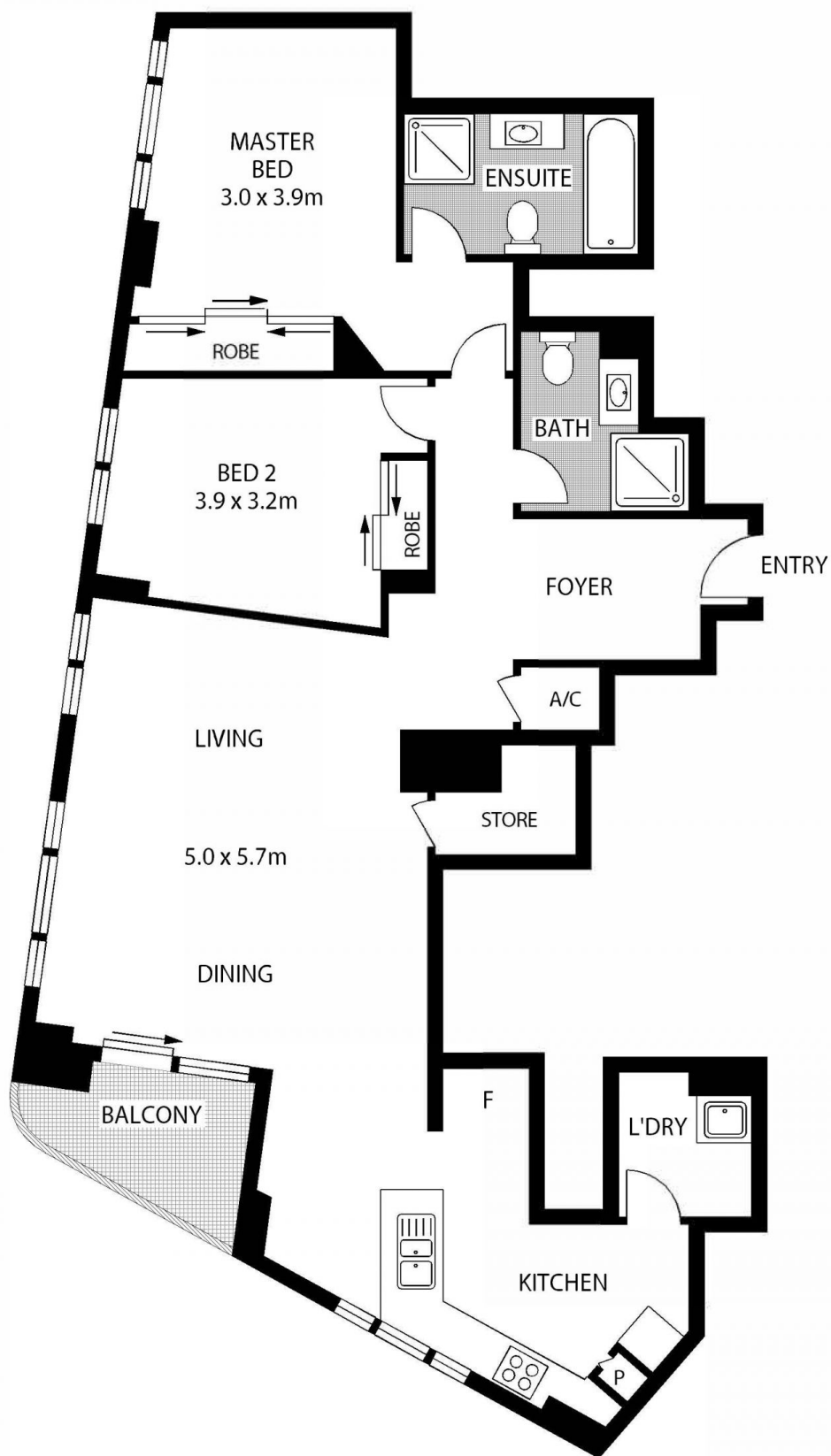
Agents

Ian Qiu

📞 0447 696 425
✉ ian@morton.com.au

Naomie Texier

📞 0439 247 710
✉ naomie@morton.com.au



LEVEL 15



94/289 SUSSEX STREET

SYDNEY

SCAPE Floor Planning Disclaimer: This floor plan is conceptual only. It is provided for illustrative purposes only and should not be relied upon. We make no guarantee as to the correctness of this plan. All interested parties should make and rely on their own enquiries in determining the accuracy of the information contained in this floor plan.