



morton.

Crows Nest 29/236 Pacific Highway

1 1 1

Peacefully set to the rear of the 'Cosmopolitan' building, this spacious apartment offers modern living leafy outlook with harbour glimpses. With light filled interiors and spacious balcony, this stylish residence creates a perfect harmony of indoor/outdoor living.

- Spacious open plan living allows for sophisticated indoor/outdoor entertaining
- Leafy outlook from main room through to Iron Cove with harbour glimpses
- Generously proportioned bedroom with mirrored built-in robes
- Gourmet gas kitchen with granite benches and stainless steel appliances including dishwasher
- Full main bathroom with tub and separate concealed laundry
- Intercom entry, lift access to secure basement parking
- Resident only access to indoor swimming pool and gym facilities

View

As advertised or by appointment

Agents

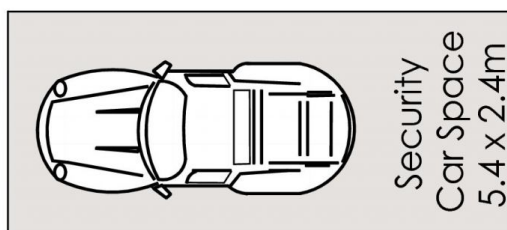
Konstantin Melnikov

0421 540 424
konstantin@morton.com.au

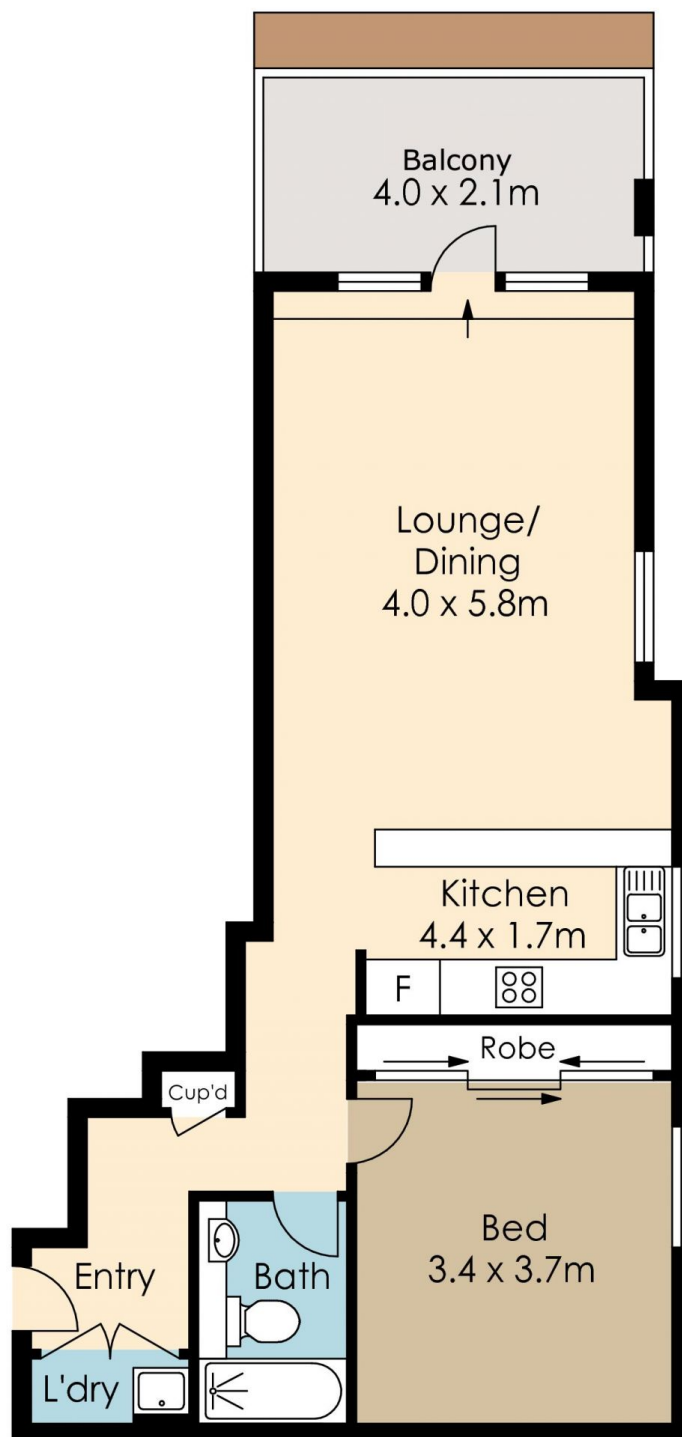
Ferenc Goemoeri

0447 025 423
ferenc@morton.com.au

morton.com.au



Level P2



Level Three



The information above is provided in good faith and has been provide to us from a variety of sources. We have not verified whether the information is accurate and do not have any belief one way or other in its accuracy. We do not accept any responsibility to any person for its accuracy and do no more than pass it on. All interested parties should rely on their own inquiries in order to determine whether or not this information is in fact accurate.