



# morton.

**North Sydney** 3/166 Pacific Highway



Located in the heart of North Sydney and a short walk to bus, train, and ferry links, this spacious 190sqm contemporary office suite will appeal to a wide range of astute investors. In addition to the open plan main office there are four separate internal offices, a fully fitted kitchen and bathroom, two secure car spaces and plenty of storage; ideal for savvy investors looking to position their business for growth.

- Large open plan main office suite measuring over 13 metres in length
- Four separate internal offices all generously proportioned, two with cupboards
- Fully fitted kitchen including stove, oven, dishwasher, and plenty of storage
- Internal reception area to receive clients
- Large bathroom with shower and separate toilet
- Two secure side by side undercover car spaces
- Separate storage space with plumbing for laundry facilities
- Independently controlled air-conditioning throughout
- Layout ideal for professional service business owners

## View

As advertised or by appointment

## Agents

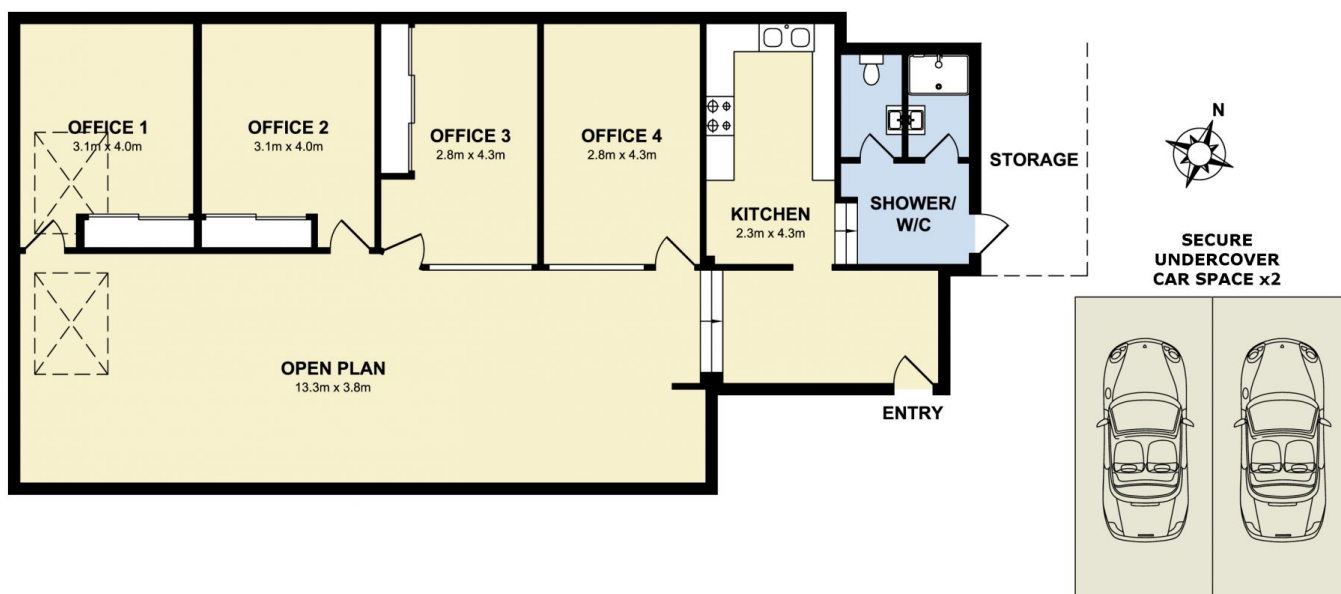
### Konstantin Melnikov

☎ 0421 540 424  
✉ konstantin@morton.com.au

### Ferenc Goemoeri

☎ 0447 025 423  
✉ ferenc@morton.com.au

**morton.com.au**



**morton.**

North Sydney 3/166 Pacific Highway