



morton.

Woolloomooloo 223/6 Cowper Wharf Roadway

3 2 1

Exceptionally appointed at the end of the historic Finger Wharf, this apartment enjoys a rare north-easterly aspect combined with a luxurious fit out, making this one of the city's premier living experiences.

- Secure entry, intercom, rare north-eastern aspect
- Smartly located at the end of the renowned Finger Wharf
- Glamorous public historic spaces
- High-spec fit out, bespoke joinery throughout
- Large open living/dining, mirrored splashback in the kitchen
- Waterfront balcony with enviable outlook to Potts Point
- Large luxe stone gas kitchen, Miele stainless steel appliances
- Entertainment system, air conditioning, built-in robes
- Wharf parking
- 24-hr security
- Access to pool/gym via membership

View

As advertised or by appointment

Agents

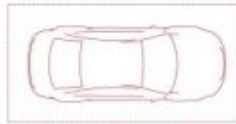
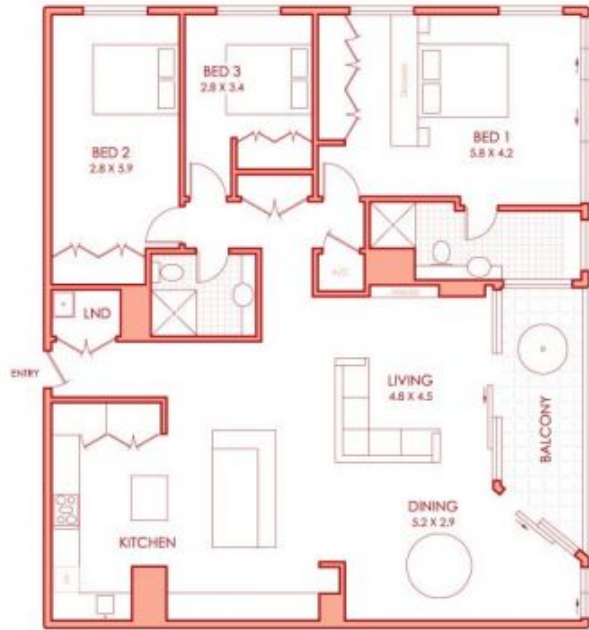
Noel Jenkins

0410 593 694
noel@morton.com.au

Christian Postiglione

0400 074 525
christian.postiglione@morton.com.au

morton.com.au



SECURITY CARSPACE



We believe the information in this document to be reliable, however interested persons should make their own enquiries. Dimensions are approximate.