



# morton.

**Glebe** B1007/89 Bay Street

2 
 2 
 1

This two-bedroom apartment on the coveted 10th level of "Mezzo" offers an unparalleled living experience. Revel in the uninterrupted panoramic views of the city skyline and the picturesque Wentworth Park, creating a secure and private haven that effortlessly combines convenience, comfort, and luxury.

- Sleek kitchen with stone bench tops, gas cooking and dishwasher
- Queen-sized bedrooms with built-in robes
- Master bedroom complete with ensuite and access to balcony
- Corner situated apartment, east-facing
- Spacious combined living and dining area
- Modern bathrooms with separate internal laundry
- Ducted Air conditioning, secure parking with storage, security intercom
- Rooftop garden with panoramic views of the Harbour and City

## View

As advertised or by appointment

## Agents

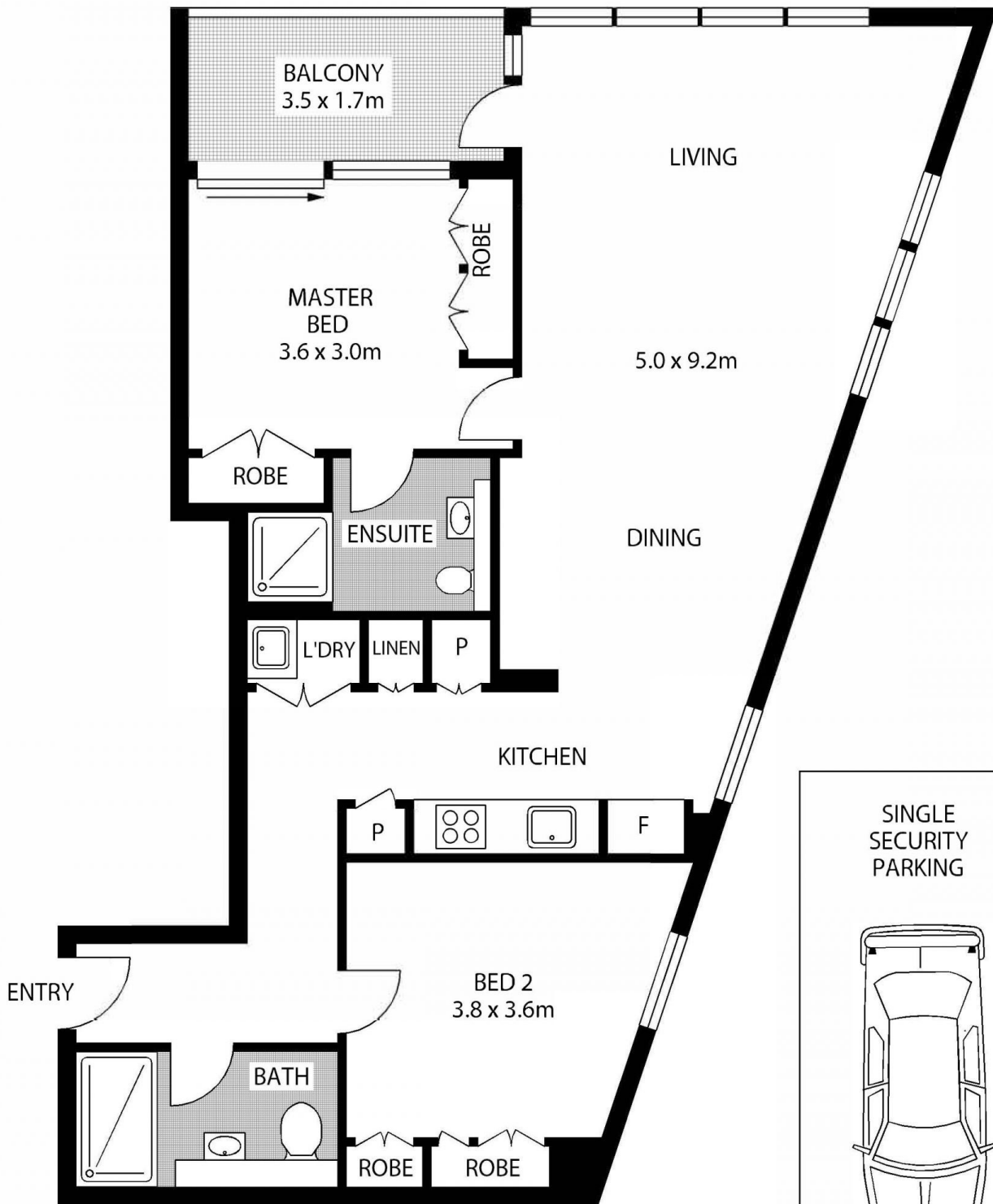
### Ian Qiu

0447 696 425  
 ian@morton.com.au

### Naomie Texier

0439 247 710  
 naomie@morton.com.au

**morton.com.au**



**LEVEL 10**



**B1007/89 BAY STREET**

**GLEBE**

SCAPE Floor Planning Disclaimer: This floor plan is conceptual only. It is provided for illustrative purposes only and should not be relied upon. We make no guarantee as to the correctness of this plan. All interested parties should make and rely on their own enquiries in determining the accuracy of the information contained in this floor plan.