



# morton.

**Wentworth Point** 43/27 Bennelong Parkway

 1  1  1

The beautifully landscaped surrounds of Sydney Olympic Park and the Archery Centre form an impressive backdrop to this smartly appointed 'Spinnaker' apartment. Light-filled throughout and featuring many stylish updates, it offers a generously proportioned property designed to provide an easy-maintenance lifestyle with a quality design and a great in/outdoor flow, along with a premium waterside address.



- An elevated position enjoying pleasant parkland surrounds
- The freshly updated interiors feature sleek hybrid flooring
- Wide entertainment terrace that captures expansive views
- A generous air-conditioned bedroom with balcony access
- Neat gas kitchen includes a dishwasher and breakfast bar
- A security car space, easy lift access and intercom entry
- Exclusive use of the outdoor resort-style pool and gym

### View



As advertised or by appointment

### Agents

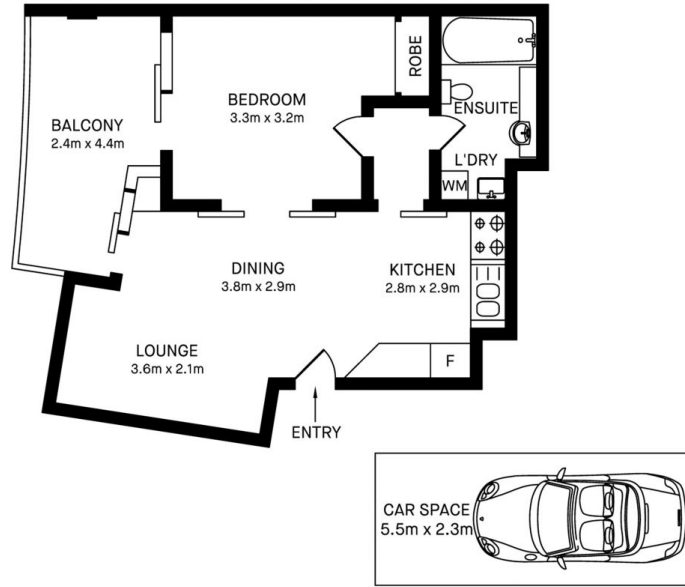
#### Dylan Choe

 0416 932 977  
 dylanchoe@morton.com.au

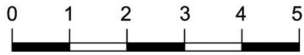
#### Hintha Mya

 0439 649 618  
 hintha.mya@morton.com.au

[morton.com.au](https://morton.com.au)



43/27 BENNELONG PARKWAY, WENTWORTH POINT



Please note these measurements are approximate only. The plans is intended as a rough guide for illustrative purpose. It is not warranted or guaranteed to be correct nor it is part of the sale or rental contract.

