



morton.

Wentworth Point G10116/1 Bennelong Parkway

2 2 1

Promising a real sense of community as part of the popular One the Waterfront development, this well-proportioned two-bedroom apartment delivers a functional single-level design along with an elevated north-easterly aspect and leafy outlooks over the complex's internal gardens. Its bright and airy layout has been well-planned to provide a low-maintenance and easy urban lifestyle with lots of natural light and a prime position directly opposite the vast expanse of Woo-la-ra parklands.

- Fresh, breezy and bright interiors with a well-considered design
- Air-conditioned living and dining area featuring cool floorboards
- An enclosed winter garden offers another in/outdoor living space
- A full gas-fitted kitchen with stone island bench and dishwasher
- Two double bedrooms with built-ins plus a dedicated study area

morton.com.au

View

As advertised or by appointment

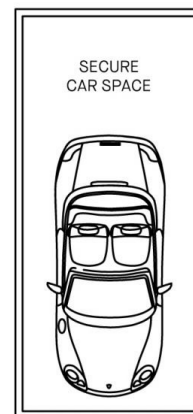
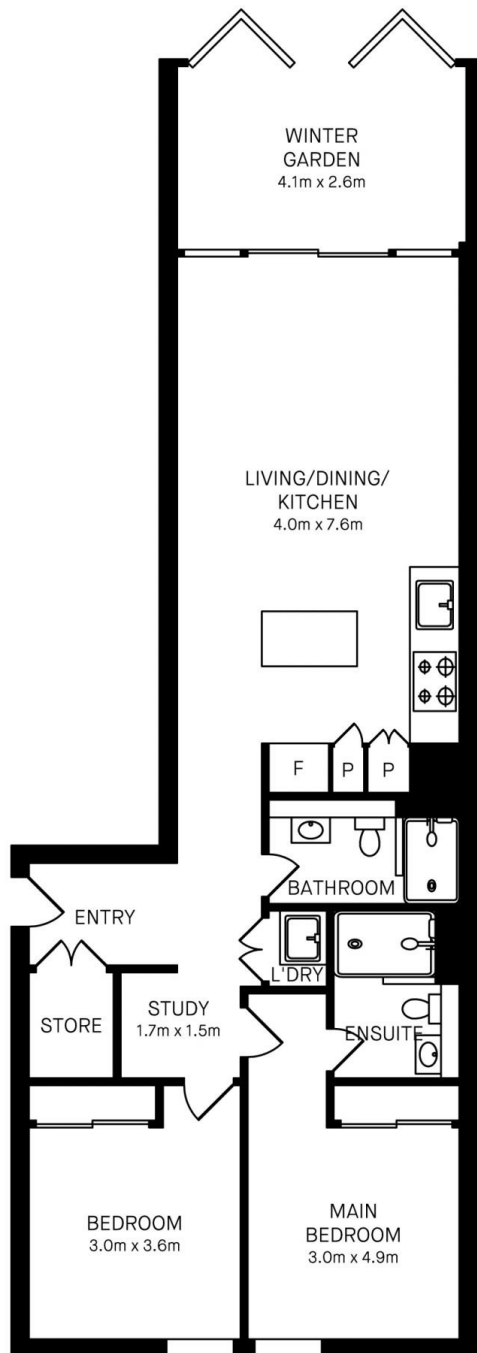
Agents

Dylan Choe

0416 932 977
dylanchoe@morton.com.au

Vivian Zhang

0447 964 200
vivian@morton.com.au



G10116/1 BENNELONG PARKWAY, WENTWORTH POINT



Please note these measurements are approximate only. The plans is intended as a rough guide for illustrative purpose. It is not warranted or guaranteed to be correct nor it is part of the sale or rental contract.



morton.