



morton.

Pyrmont 302/8-14 Wharf Crescent

3 2 2

Proudly set in a prestigious harbourside position within the ultra-exclusive 'Saunders Wharf' boutique building of just 27 'Mirvac' luxury homes. This is a residence of unrivalled refinement, quality and sophistication. Dominated by iconic views across the harbour to the soaring city skyline, Barangaroo and Harbour Bridge, this is a property of the highest standard.

- Expansive entertaining with open-plan lounge and dining
- Generous master, ensuite with bathtub and built-ins
- Sleek stone kitchen, Miele appliances, soft-touch cabinetry
- Adjacent breakfast area awash with morning sunlight
- Sleek designer bathrooms, frameless glass showers
- Secure double garage plus oversized secure storage
- Automated and sliding exterior privacy screens
- Ducted air conditioning, video intercom
- Stylish entry lobby, lift access, 2 apartments per level
- Ultra exclusive harbour front cul-de-sac location

Beautifully appointed with exacting attention to detail and a

morton.com.au

View

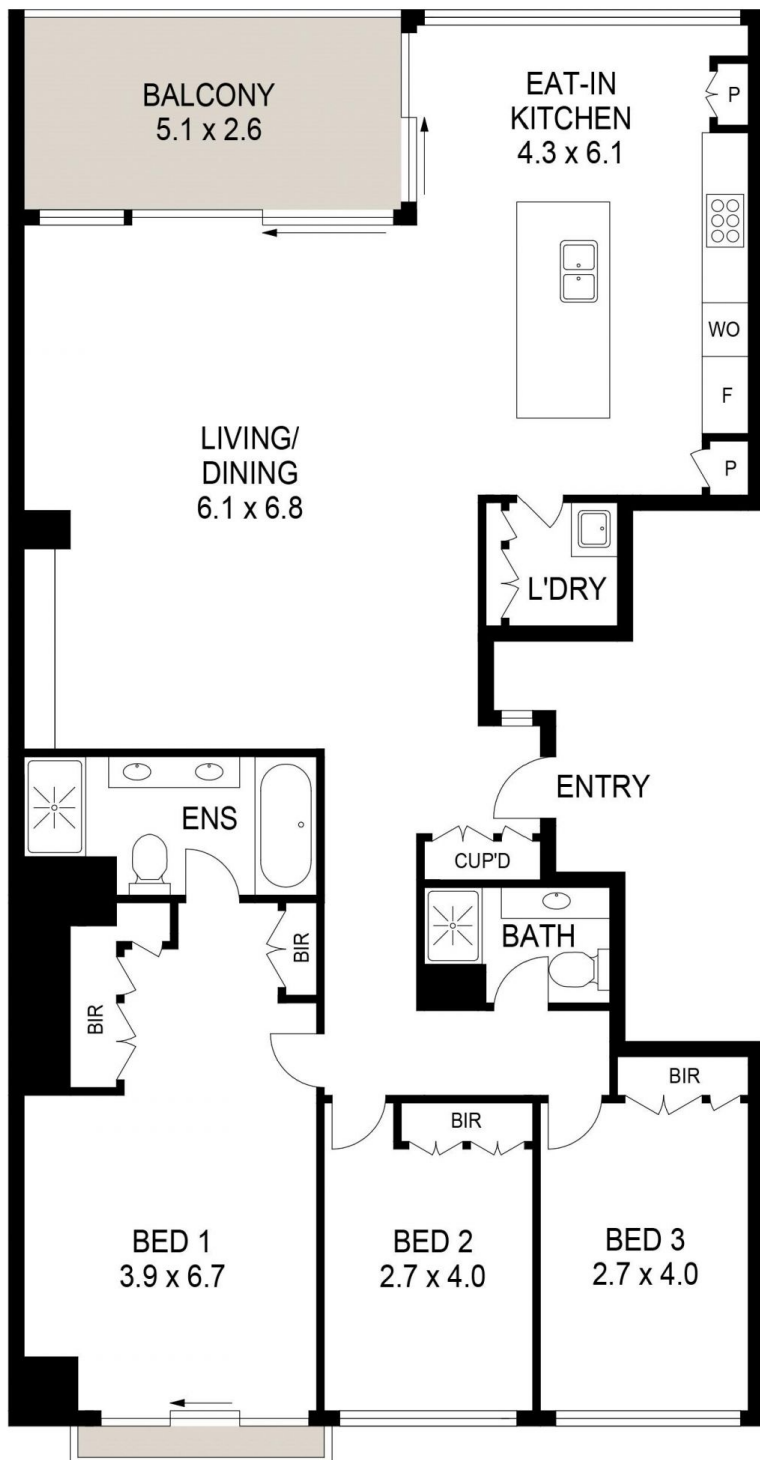
As advertised or by appointment

Agent

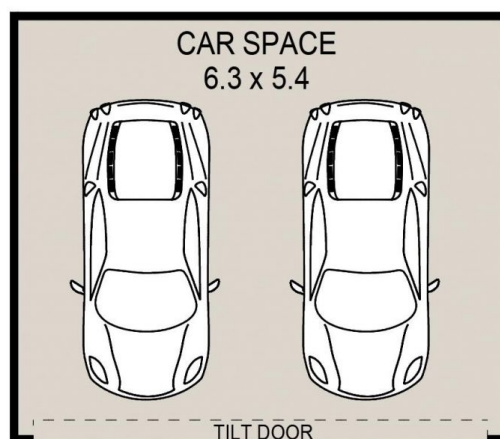
James Crow

0410 593 057

james@morton.com.au



(NOT IN POSITION)



(NOT IN POSITION)

PLANS SHOWN ONLY INDICATIVE OF LAYOUT. DIMENSIONS ARE APPROXIMATE.



PYRMONT 302/8-14 Wharf Crescent

morton.