



# morton.

Penrith 1007/8 Aviators Way

🛏 1 🚿 1 🚗 1

Perched on levels 10 and 11 in the highest position in Thornton, northeast facing with 96 sqm of in/outdoor living area, makes this huge 1-bed solit-level penthouse the size of a large 2-bed apartment, ideal for someone wanting it all.

- Spectacular oval and Blue Mountains views from the covered balcony
- Open living and dining area with floorboards and air con, leading to the carpeted staircase with double window panes bursting with morning sun
- Upstairs carpeted bedroom quarters with mirrored walk-in robes, air con and ensuite with dual access as a guest bathroom
- Study nook upstairs including linen cupboard/storage room and internal laundry with dryer and more storage
- Mirrored splashback to the stylish galley kitchen, 4 burner gas cooktop, Omega appliances, including a dishwasher and microwave, ample storage
- Powder room downstairs as second toilet
- Pet friendly building with 102 apartments and 2 lifts, built

### View

As advertised or by appointment

### Agents

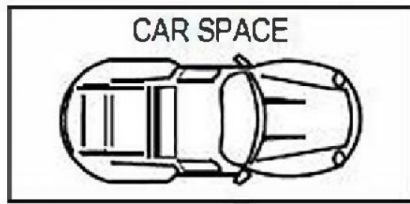
#### David Lipman

📞 0409 663 535  
✉ david@morton.com.au

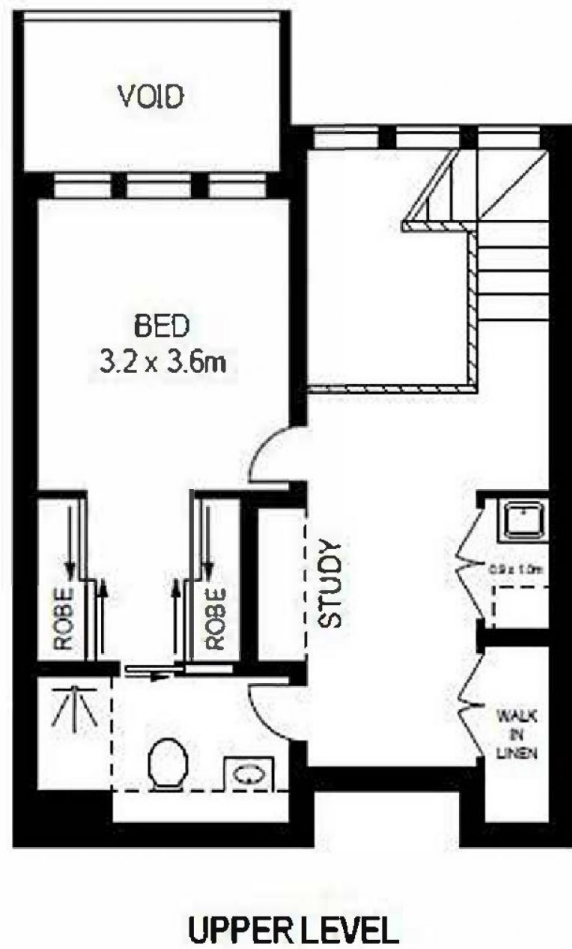
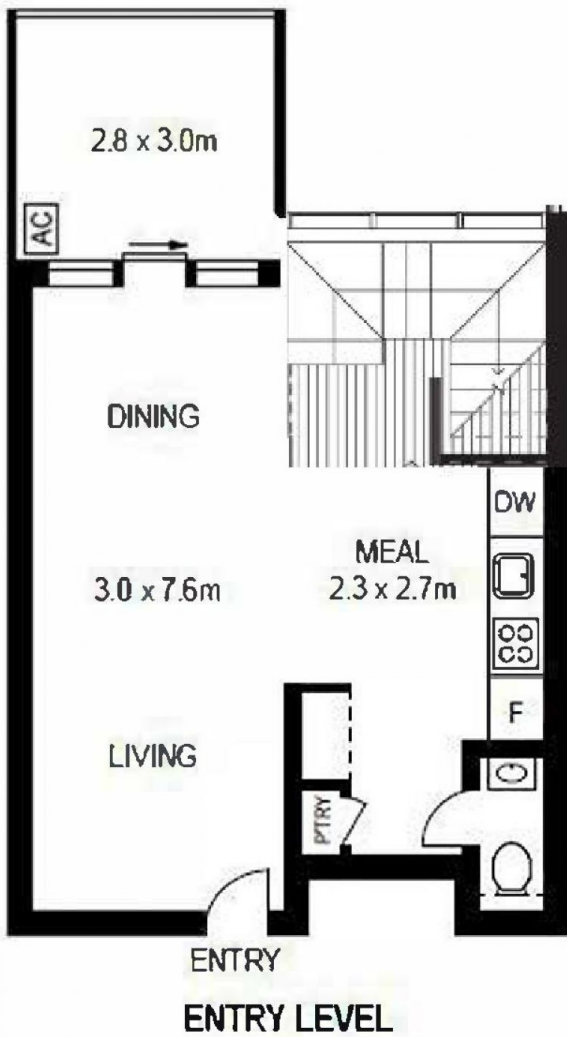
#### Jamie Bae

📞 0409 968 604  
✉ jamie.bae@morton.com.au

[morton.com.au](http://morton.com.au)



**BASEMENT 2  
NO. 53**



APPROX. INT. AREA : 85m<sup>2</sup>  
 APPROX. EXT. AREA : 10m<sup>2</sup>  
 TOTAL AREA INCLUDING  
 CAR SPACE: 110m<sup>2</sup>

**1007/8 AVIATORS WAY, PENRITH**



Please note these measurements are approximate only. The plans is intended as a rough guide for illustrative purpose. It is not warranted or guaranteed to be correct nor it is part of the sale or rental contract

