



# morton.

**Kingsford** 3/32 Middle Street

 3  2  2

\*DEPOSIT SENT\*

Located in the heart of Kingsford this large three bedroom townhouse offers spectacular west facing views over the hill and parts of the CBD. Conveniently located within walking distance of Prince of Wales Hospital, UNSW, local shops/cafes and public transport, this property offers everything needed for easy inner city living.

Features include:


- Three bedrooms, two with built ins
- Floorboards throughout entertaining areas
- Internal laundry
- Double lock up garage with direct internal access
- Separate balcony off master bedroom
- Near new kitchen with gas cooking, dishwasher and fridge
- Exclusive entertainers terrace and small garden
- Air Conditioning

**View**

As advertised or by appointment

**Agent**

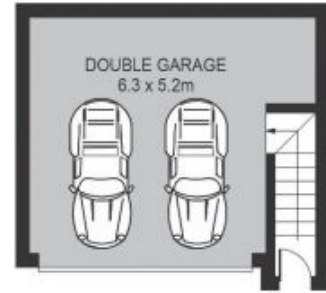
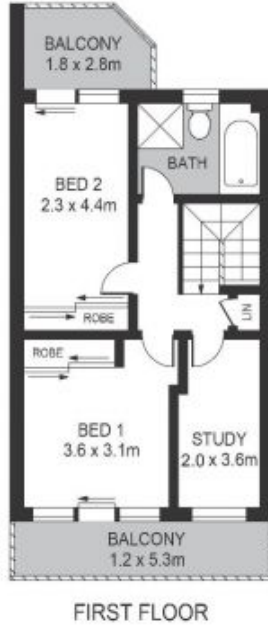
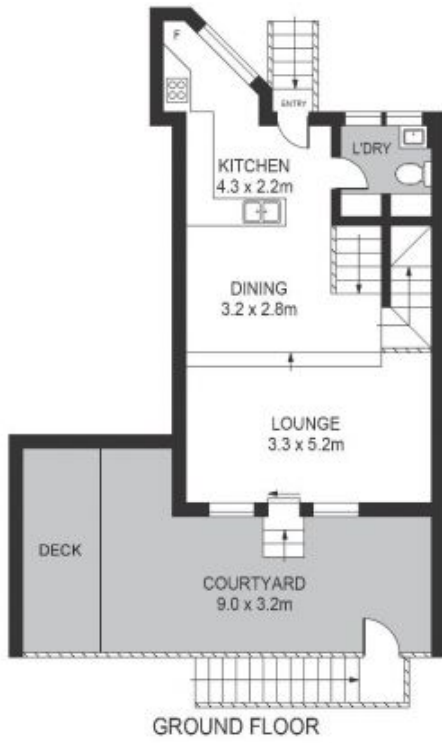
**Alexander Karabanov**

 0409 896 152

 alexander.karabanov@morton.com.au

[morton.com.au](http://morton.com.au)

3/32 MIDDLE STREET, KINGSFORD



Please note these measurements are approximate only. The plan is intended as a rough guide for illustrative purpose. It is not warranted or guaranteed to be correct nor is it part of the scale or contract.

