



morton.

Ermington 822/68 River Road

🛏 2 🚿 2 🚗 1

You just feel good when you walk through the door of this well-proportioned two-bedroom apartment that captures the essence of easy urban style. The stylishly presented property has been cleverly designed to provide a fresh and contemporary living space with a flowing layout and a great-sized balcony that go together to provide a fantastic in/outdoor environment in a premium riverside community.

- Corner positioned & high ceiling with beautiful natural lights
- Light and airy interiors feature open-style lounge & dining areas
- An easy level flow to a wide covered balcony with park views
- Sleek modern kitchen equipped with chic stainless-steel fittings
- Both bedrooms have generous built-in storage, main has ensuite
- Easy-clean flooring, crisp white décor and air-conditioning
- Security tandem car space plus a separate lock-up storage cage
- In a quality pet-friendly building close to a choice of

View

As advertised or by appointment

Agents

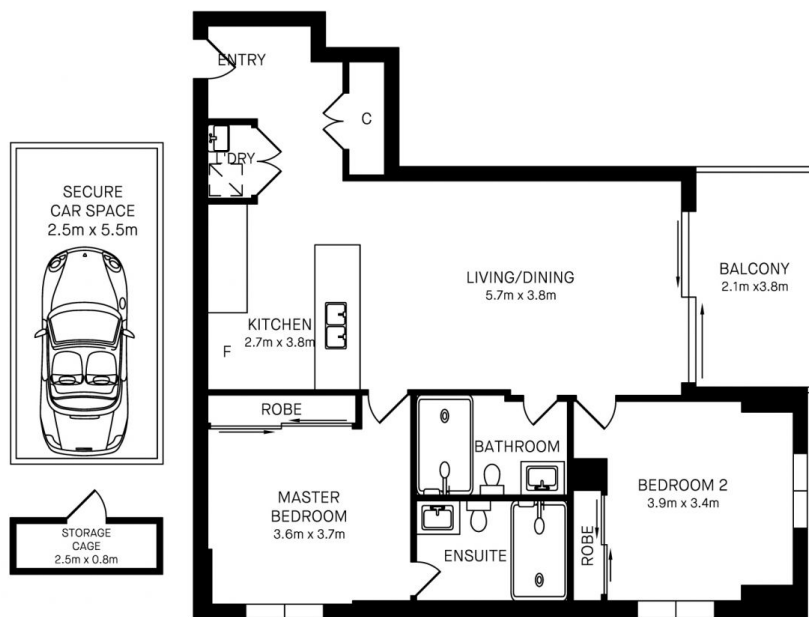
Dylan Choe

📞 0416 932 977
✉ dylanchoe@morton.com.au

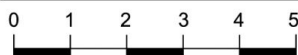
Hintha Mya

📞 0439 649 618
✉ hintha.mya@morton.com.au

morton.com.au



822/68 RIVER ROAD, ERMINGTON



Please note these measurements are approximate only. The plans are intended as a rough guide for illustrative purpose. It is not warranted or guaranteed to be correct nor is it part of the sale or rental contract.

