



morton.

Pyrmont T09/1 Distillery Drive

 3  2  1

Flowing over 150 sqm, this split-level haven is nestled within the esteemed "Antias" building; the final piece of the Lend Lease Masterplan. Set within a quiet cul de sac and finished in 2012, this urban renewal project comprises of only 43 apartments and joins the grand aesthetic of the Anzac Bridge.

- Recently repainted and recarpeted throughout
- Prime corner position, drenched in natural sunlight
- Views overlooking the Anzac Bridge and glimpses of Blackwattle Bay
- Open plan lounge and dining area, sunny terrace
- Secluded master with ensuite and walk-in wardrobe
- Designer CaesarStone kitchen
- AEG gas appliances and self-cleaning oven
- Direct pedestrian access from established parklands
- Storage cage, internal storeroom and air conditioning
- Quality finishes throughout and immediate parking access
- Study alcove, high ceilings, video/audio intercom
- Green Star rated building - EV ready and new common property solar

morton.com.au

View

As advertised or by appointment

Agents

Ian Qiu

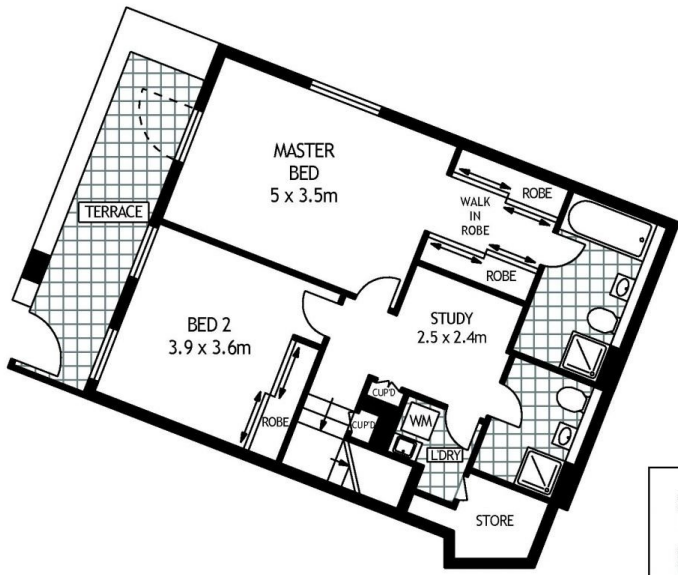
 0447 696 425

 ian@morton.com.au

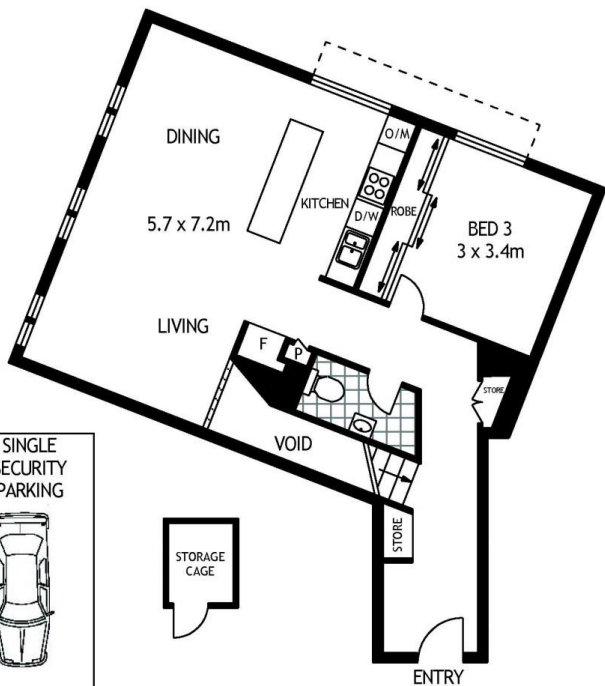
Naomie Texier

 0439 247 710

 naomie@morton.com.au



LOWER LEVEL



UPPER LEVEL



T09/1 DISTILLERY DRIVE

PYRMONT

SCAPE Floor Planning Disclaimer: This floor plan is conceptual only. It is provided for illustrative purposes only and should not be relied upon. We make no guarantees to the correctness of this plan. All interested parties should make and rely on their own enquiries in determining the accuracy of the information contained in this floor plan.