



morton.

Ashfield 104/425 Liverpool Road

 2  2  1

A highly accessible location central to all of Ashfield's attractions means this first-class two-bedroom home delivers lifestyle in all directions. Set within the architectural Ashpark security complex, it makes an instant impact with its generous interior design that combines space, light and style to provide a private retreat with a sleek contemporary feel and the ultimate in convenience.



- An elevated aspect that captures vibrant suburb outlooks
- Light and airy open design featuring easy care tiled flooring
- Wintergarden balcony accessed from living area and bedroom
- Central island kitchen featuring breakfast bar and gas-cooking
- Both bedrooms are fully carpeted and fitted with built-in robes
- Level lift access to a car space and caged storage in the basement
- Ducted air-conditioning, intercom and two modern bathrooms
- Walking distance to Ashfield Aquatic Centre and Croydon

View



As advertised or by appointment

Agents

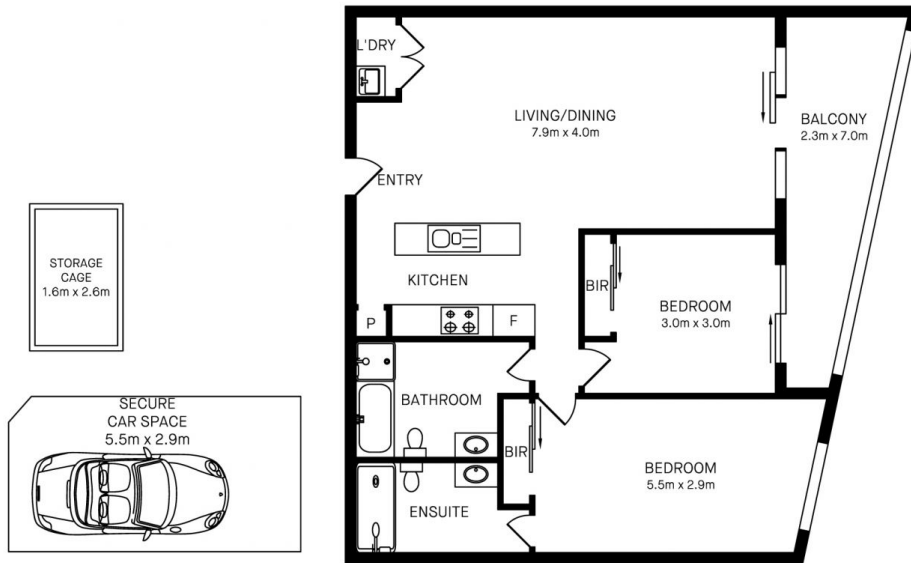
Dylan Choe

 0416 932 977
 dylanchoe@morton.com.au

Hintha Mya

 0439 649 618
 hintha.mya@morton.com.au

morton.com.au



104/425 LIVERPOOL ROAD, ASHFIELD



Please note these measurements are approximate only. The plans is intended as a rough guide for illustrative purpose. It is not warranted or guaranteed to be correct nor it is part of the sale or rental contract.

