



morton.

Crows Nest 15/236 Pacific Highway

2 2 1

Peacefully set to the rear of the 'Cosmopolitan' building, this spacious apartment creates a perfect harmony of indoor/outdoor living. Providing stylish convenience in a highly sought-after location, this two-bedroom residence offers a vibrant, easy-care lifestyle opportunity.

- Spacious open plan layout allows for sophisticated indoor/outdoor living
- Full-length balcony ideal for entertaining
- Two generously proportioned bedrooms both with built-in robes
- Light-filled main bedroom with ensuite and balcony access
- Gourmet gas kitchen with granite benches and stainless steel appliances including dishwasher
- Separate concealed laundry and lift access to secure basement parking
- Resident-only access to indoor swimming pool and gym facilities

View

As advertised or by appointment

Agents

Konstantin Melnikov

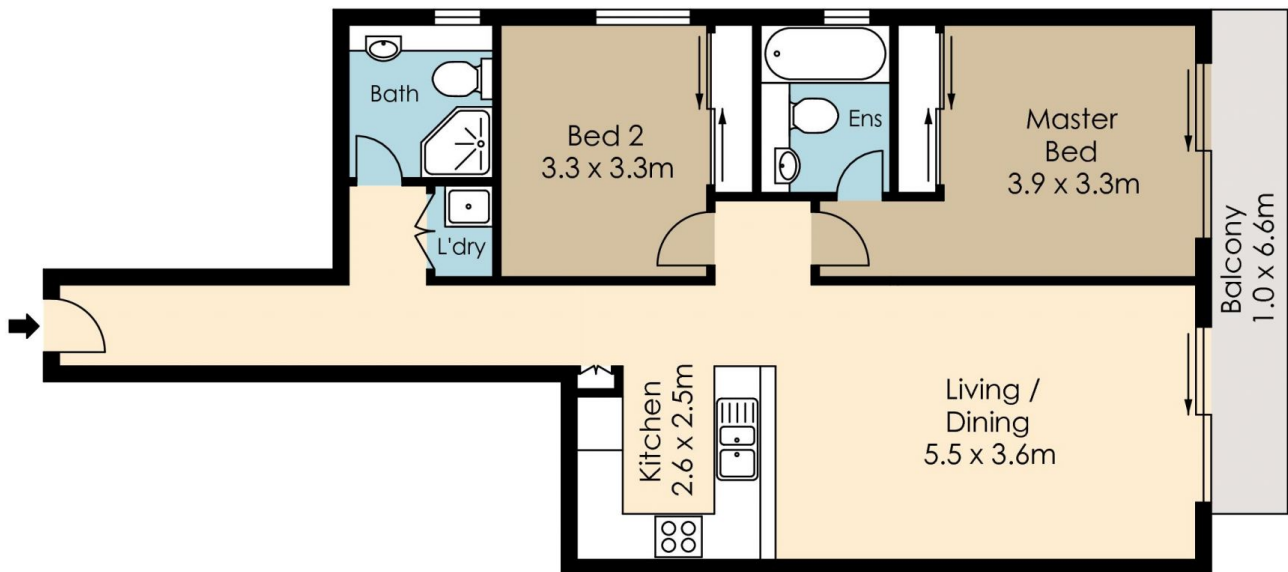
0421 540 424
konstantin@morton.com.au

Ferenc Goemoeri

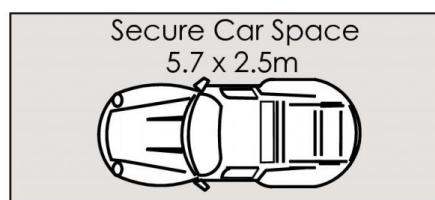
0447 025 423
ferenc@morton.com.au

morton.com.au

15/236 Pacific Highway, Crows Nest



GROUND LEVEL



BASEMENT LEVEL



The information above is provided in good faith and has been provide to us from a variety of sources. We have not verified whether the information is accurate and do not have any belief one way or other in its accuracy. We do not accept any responsibility to any person for its accuracy and do no more than pass it on. All interested parties should rely on their own inquiries in order to determine whether or not this information is in fact accurate.

Floor Plan by www.squaremeter.com.au