



morton.

Parramatta 241/3 Darling Island Road

3 3 2

Extraordinary space, quality and luxury define this one-of-a-kind harbourfront residence that occupies an entire floor at the northernmost tip of the exclusive Darling Island enclave. Created to provide an unrivalled on-the-water experience and set against an inspiring city and harbour backdrop, it offers an impeccable lifestyle apartment of size and sophistication with an impressive 292sqm in/outdoor living area with an exceptional sense of space, light and privacy.

- Beautifully renovated with many high-quality bespoke finishes
- Spectacular cityscape views captured from all major rooms
- Mesmerizing harbour backdrop inc. the Bridge and Barangaroo
- Large walls of glass that maximise natural light and outlooks
- Spacious and light-filled open plan with heated limestone flooring
- An entertainment terrace with balconies with sublime city views
- Contemporary kitchen with Miele appliances and wine fridge

View

As advertised or by appointment

Agent

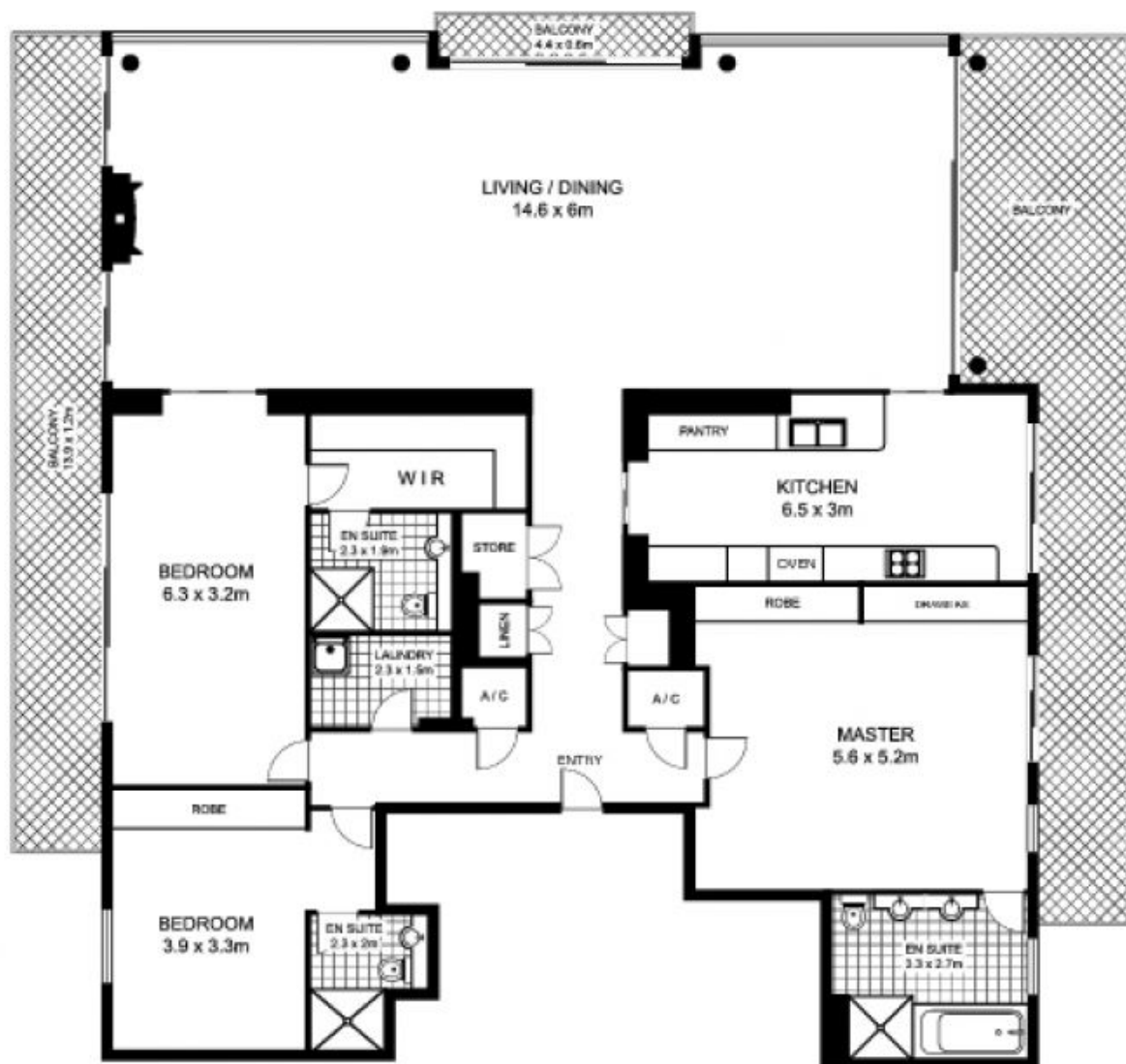
Cesar Rojas Soto

0407 547 996

cesar.rojas-soto@morton.com.au

morton.com.au

241/3 Darling Island Rd, PYRMONT



This floor plan is intended as a guide only. Layout dimensions are approximate only. No representations or warranties of any nature whatsoever are given or intended. Any person using this information should rely on their own enquiries