



morton.

Melrose Park 102/2D Wharf Road

🛏 2 🚿 2 🚗 1

Spacious, private and stylish living in Melrose Park doesn't get any better than in this impressively proportioned single-level residence that sits conveniently on the border of Ermington and West Ryde. Offering a fresh and carefree lifestyle with streaming natural light and leafy outlooks, it makes a quality property of undeniable appeal and has been well-designed to offer a modern urban home in the Melrose Park smart living community.

- A northerly aspect, large windows and excellent natural light
- Expansive courtyard-sized terrace, perfect for entertaining
- Bright, airy and open interiors featuring cool tiled flooring
- Both bedrooms are double-sized and have courtyard access
- The main bedroom has a study area, built-ins and ensuite
- Contemporary gas kitchen, designer bathroom, internal laundry
- A security car space plus a lock-up storage cage in the basement
- Air-conditioning, intercom, lift access and EV charging stations

morton.com.au

View

As advertised or by appointment

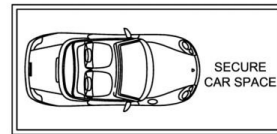
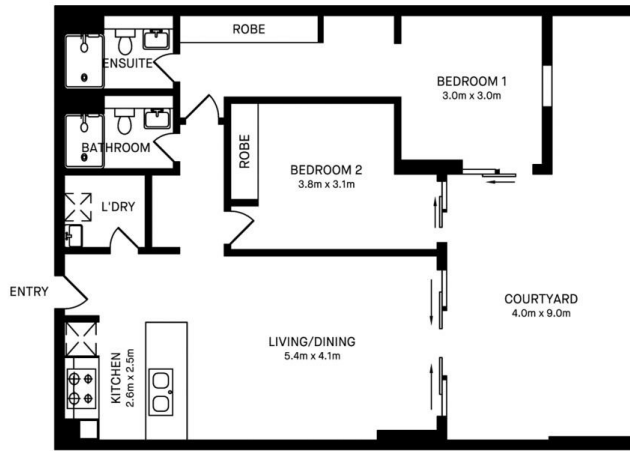
Agents

Dylan Choe

📞 0416 932 977
✉ dylanchoe@morton.com.au

Hintha Mya

📞 0439 649 618
✉ hintha.mya@morton.com.au



102/2D WHARF ROAD, MELROSE PARK



Please note these measurements are approximate only. The plans is intended as a rough guide for illustrative purpose. It is not warranted or guaranteed to be correct nor it is part of the sale or rental contract.

