



morton.

Potts Point 305/15 Bayswater Road

1 1

This stunning apartment in the Hampton building is amid vibrant cafes and bars and its north east facing interiors are flooded with natural light. Conveniently positioned near the public transport options and easy access to City CBD and Bondi.

- 62sqm with high ceilings
- CaesarStone island kitchen features Smeg stainless gas stove
- Large master bedroom fitted with built in wardrobes
- Open plan living area with a north east aspect
- Fully tiled modern bathroom
- Timber floors
- Features include ducted air conditioning and internal laundry

View

As advertised or by appointment

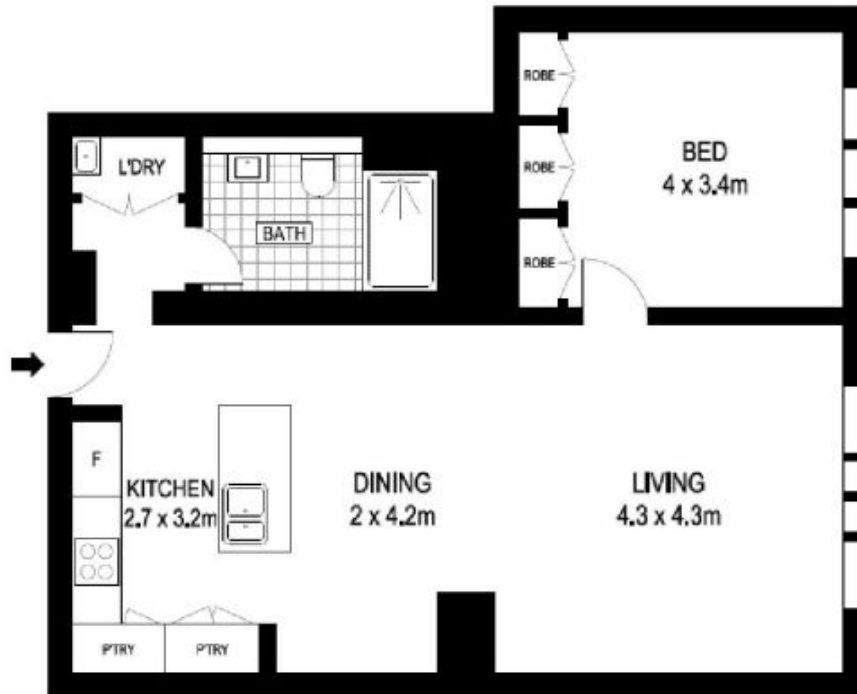
Agent

Cesar Rojas Soto

0407 547 996

cesar.rojas-soto@morton.com.au

morton.com.au



LEVEL THREE



Scale in metres. Indicative only. Dimensions are approximate. All information contained herein is gathered from sources we believe to be reliable. However we cannot guarantee its accuracy and interested persons should rely on their own enquiries.