



# morton.

**Zetland** 401/2 Victoria Park Parade

🛏 2 🚿 2 🚗 1

Located in the heart of Zetland, just moments from East Village shopping mall offering restaurants, and shops, with city-bound buses at your doorstep. Walking distance to the Green Square train station.

- Facing North-East and North-West with good ventilation
- Bright North-East facing living room
- Second bedroom access to a sunny balcony
- Good size two bedrooms all with build-ins, main has an en-suite
- Chic floor to ceiling tiled bathrooms all have external windows
- Large Study room with window
- Modern kitchen with CaesarStone bench and Miele Appliances
- Timber floor throughout; plenty of storage space
- One secure car space and one cage storage
- Unfurnished

## View

As advertised or by appointment

## Agents

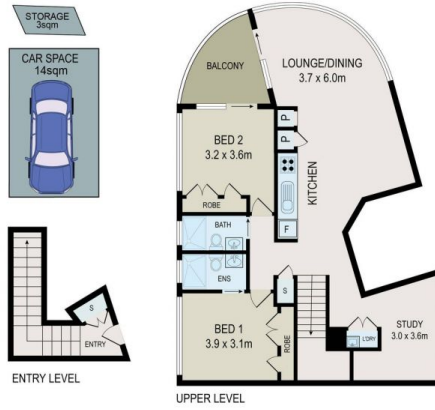
### Alexander Karabanov

📞 0409 896 152  
✉ alexander.karabanov@morton.com.au

### Emma Ryan

📞 0409 325 440  
✉ emmar@morton.com.au

**morton.com.au**



0 1 2 3 4 5

All information contained herein is gathered from all sources we believe to be reliable. However we cannot guarantee its accuracy and interested parties should rely on their own enquiries.



Cambridge

401/2 Victoria Park Parade, Zetland