



morton.

Sydney 349/298 Sussex Street

1 1 1

Nestled within an esteemed inner-city district, this spacious 61 sqm apartment presents an exceptional gateway to an exclusive lifestyle. Boasting generous proportions and unparalleled convenience, it seamlessly blends sophisticated design with abundant natural light. Positioned mere moments from the vibrant Darling Harbour and the bustling heart of the CBD, it epitomises modern urban living at its finest.

- Ideal for low-maintenance investment or pied-à-terre living
- Modern granite kitchen seamlessly integrates gas appliances
- Amenities including gym, sauna, and heated indoor pool
- Air-conditioning, video intercom, and spacious internal laundry facilities
- Secure lock-up garage; concierge services for additional convenience

Auction

Saturday, 25 May 2024, 11:00 am

View

As advertised or by appointment

Agents

Ettiene West

0410 593 749

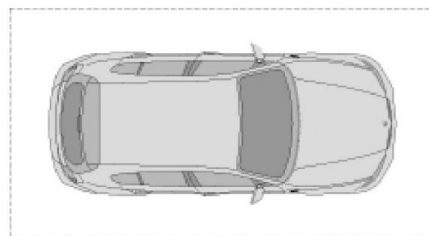
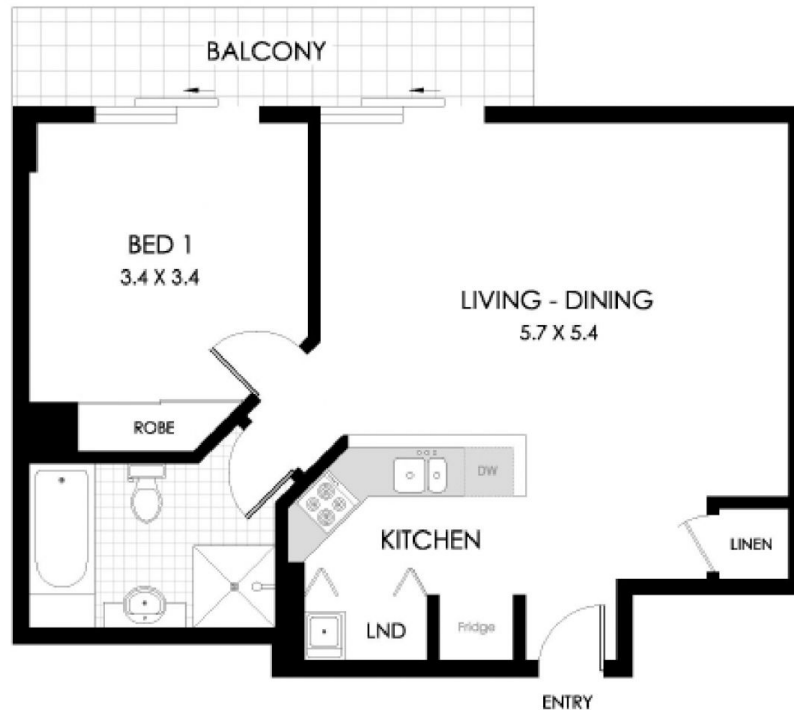
ettiene@morton.com.au

Arman Zounuzy

0410 539 793

arman.zounuzy@morton.com.au

morton.com.au



SECURITY CARSPACE

0 1 2 3 SCALE (METRES)
 PLANS SHOWN ARE ONLY INDICATIVE OF LAYOUT. DIMENSIONS ARE APPROXIMATE

All information contained herein is gathered from sources we believe to be reliable, however we cannot guarantee its accuracy and interested persons should rely on their own enquiries. Dimensions are approximate.



349/298 SUSSEX STREET

SYDNEY

Internal: 54m²

Balcony: 7m²

Apartment Size: 61m²