



morton.

Wollstonecraft 5B/80 Shirley Road

 3  2  1

Perched high above the street with show-stopping City and Sydney Harbour Bridge Views this generously proportioned and recently updated home offers a classy mix of old meets new. Newly renovated building and fresh interior featuring new carpet, paint, and lighting whilst maintaining its old school charm and character.

- New carpet, paint and lighting throughout
- Over-sized layout with combined living/dining flows to covered entertainers balcony
- Featuring Harbour Bridge and City views from Balcony, Living, Dining, Kitchen and Master suite
- Character filled electric kitchen, abundant in storage options includes dishwasher
- Master bedroom retreat features a plethora of wardrobe space and neat ensuite bathroom
- Fantastic sized bedrooms, second bedroom with built-ins
- Main bathroom includes separate bathtub and shower recess, perfect for all ages
- Sizeable internal laundry room with dryer included

morton.com.au

View

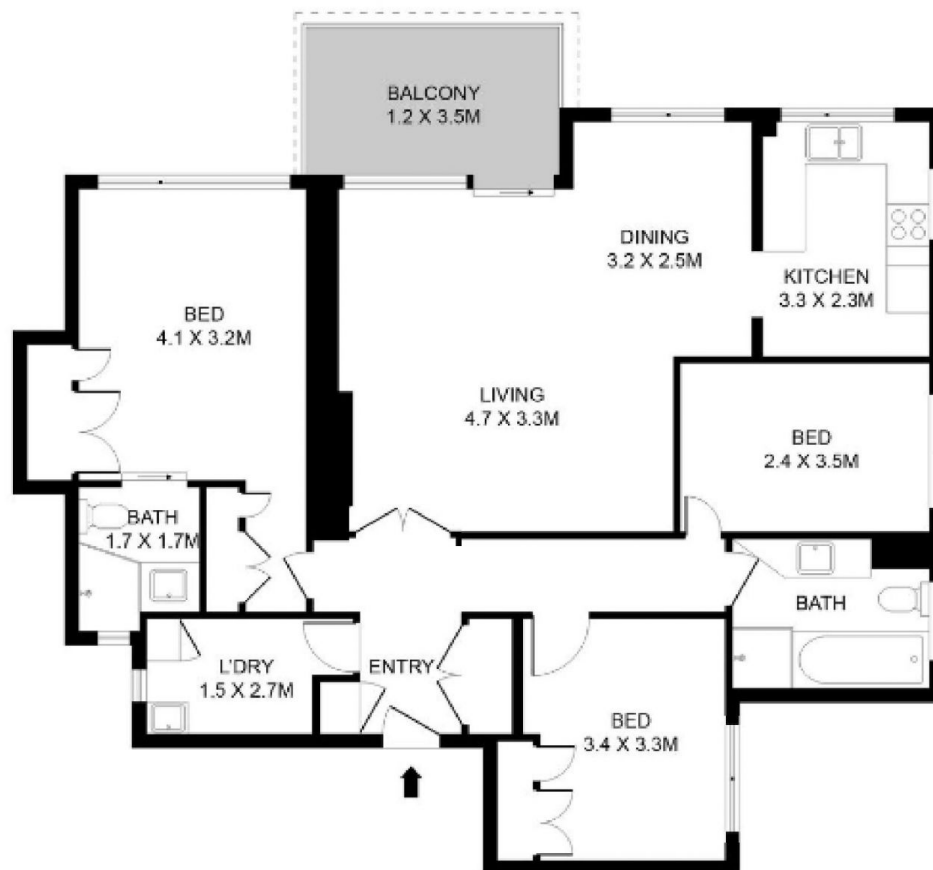
As advertised or by appointment

Agent

Martyna Majno

 0438 544 328

 martyna.majno@morton.com.au



0 1 2 3 SCALE (METERS)

Plans shown are for presentation purposes only and are not part of any legal document or title. They are subject to errors, omissions, inaccuracies and should not be used as a sole and accurate reference. Interested parties should make their own inquiries using independent sources. This floor plan is exclusively for Laing+Simmons North Sydney marketing and was drawn by therealestatephotographer.com.au.