



# morton.

**Sydney** 1607/197-199 Castlereagh Street

🛏 1 🛋 1

Presenting contemporary comfort and abundant potential, this inviting 16th-floor apartment in the highly acclaimed 'Victoria Towers' ensures a lifestyle of convenience in the heart of the city. It boasts open-plan living areas and ample bedroom space complemented by a balcony. Situated just a 270m walk from Town Hall Station/light rail, and a leisurely stroll from Pitt Street Mall and Queen Victoria Building, it offers modern ease of living coupled with unparalleled accessibility.

- Spacious bedroom featuring mirrored built-in wardrobe and balcony access
- Well-equipped kitchen with gas cooking, dishwasher, and ample storage
- Secure building offering intercom access and 24-hour concierge service
- Ready to move in or potential for updates to suit personal preferences
- Conveniently located close to shops, theatres, bars, cafes, and restaurants
- Easy access to iconic landmarks such as the Royal Botanic

## View

As advertised or by appointment

## Agents

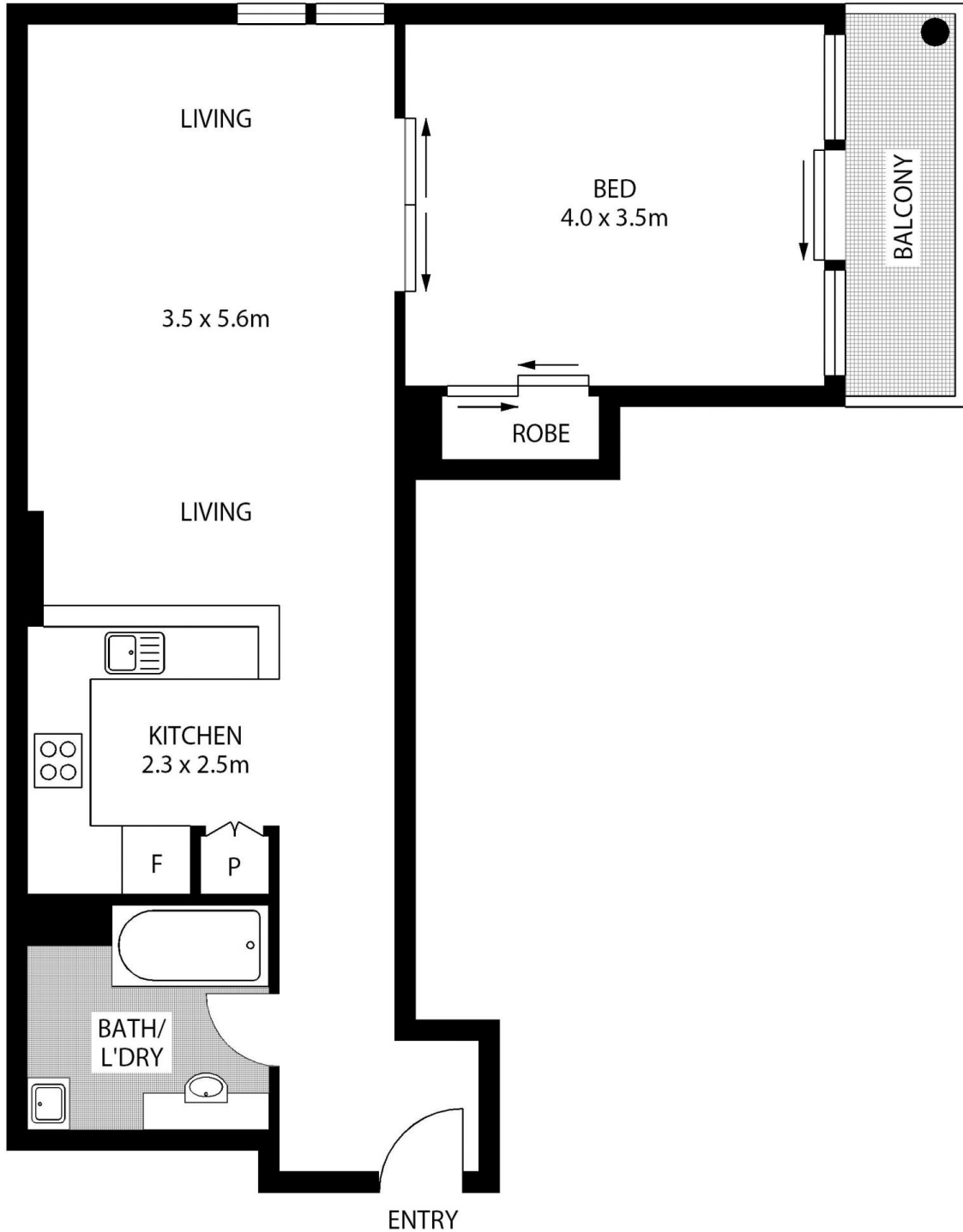
### Ettiene West

📞 0410 593 749  
✉ ettiene@morton.com.au

### Arman Zounuzy

📞 0410 539 793  
✉ arman.zounuzy@morton.com.au

**morton.com.au**



**LEVEL 16**



**1607/199 CASTLEREAGH STREET**

**SYDNEY**

SCAPE Floor Planning Disclaimer: This floor plan is conceptual only. It is provided for illustrative purposes only and should not be relied upon. We make no guarantee as to the correctness of this plan. All interested parties should make and rely on their own enquiries in determining the accuracy of the information contained in this floor plan.