



morton.

Pyrmont 8C/4 Distillery Drive

🛏 2 🚿 2 🚗 1

An exquisite urban oasis awaits in this meticulously cared for and generously proportioned residence situated on the 8th floor of the prestigious Sugar Dock complex within the estate of Jacksons Landing. Boasting breathtaking cityscape views and views of Blackwattle Bay, it immediately charms with its sophisticated contemporary layout maximizing space, natural illumination, and panoramic vistas.

- A perfect north-east aspect floods the rooms with natural light
- Covered balcony leads off the living space and both bedrooms
- Spacious open-plan design with light-filled living and dining areas
- Two double bedrooms positioned at opposite ends of the floorplan
- A well-appointed island kitchen featuring a large butler's pantry
- Easy lift access to a security basement car space and storage cage

morton.com.au

Auction

Tuesday, 21 May 2024, 6:00 pm

View

As advertised or by appointment

Agents

Ian Qiu

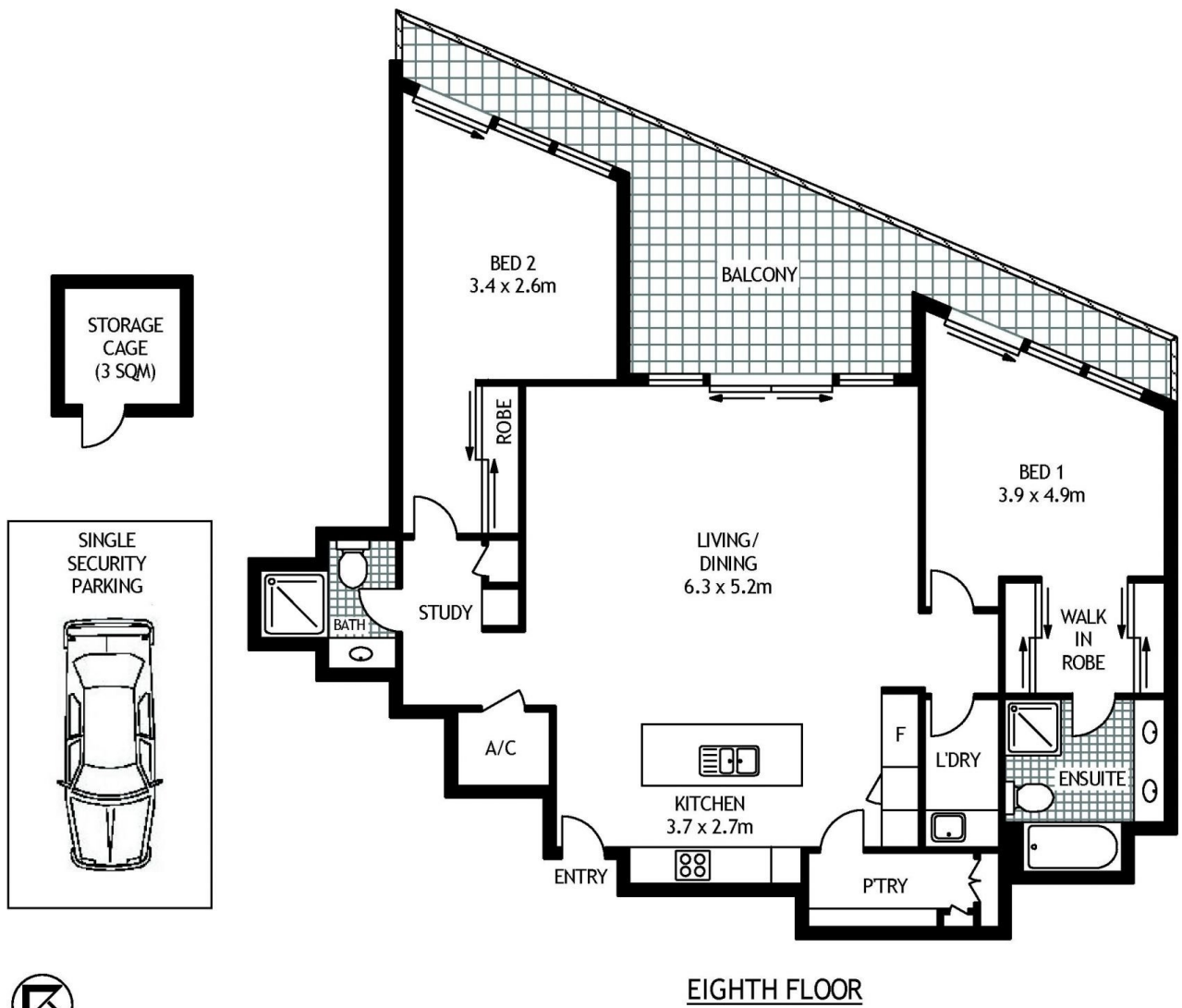
📞 0447 696 425

✉ ian@morton.com.au

Naomie Texier

📞 0439 247 710

✉ naomie@morton.com.au



8C/4 DISTILLERY DRIVE

PYRMONT

SCAPE Floor Planing Disclaimer: This floor plan is conceptual only, it is provided for illustrative purposes only and should not be relied upon. We make no guarantees to the correctness of this plan. All interested parties should make and rely on their own enquiries in determining the accuracy of the information contained in this floor plan.