



morton.

Woolloomooloo 370/6 Cowper Wharf Roadway

1 1

Located on the heritage level of Woolloomooloo Finger Wharf, this apartment seamlessly combines historic charm and contemporary elegance. Bathed in sunlight, soaring ceilings and the original beams and braces make this an ideal opportunity for the investor or owner alike.

- City and marina views from living room and bedroom
- Bright and welcomingly low-maintenance interiors
- Timber flooring throughout the dining and living area
- Master bedroom with built-in wardrobes
- Integrated granite kitchen, stainless steel gas cooktop
- Original exposed beams, soaring traditional ceilings
- 24-hour on-site security, internal laundry, reverse air con

View

As advertised or by appointment

Agents

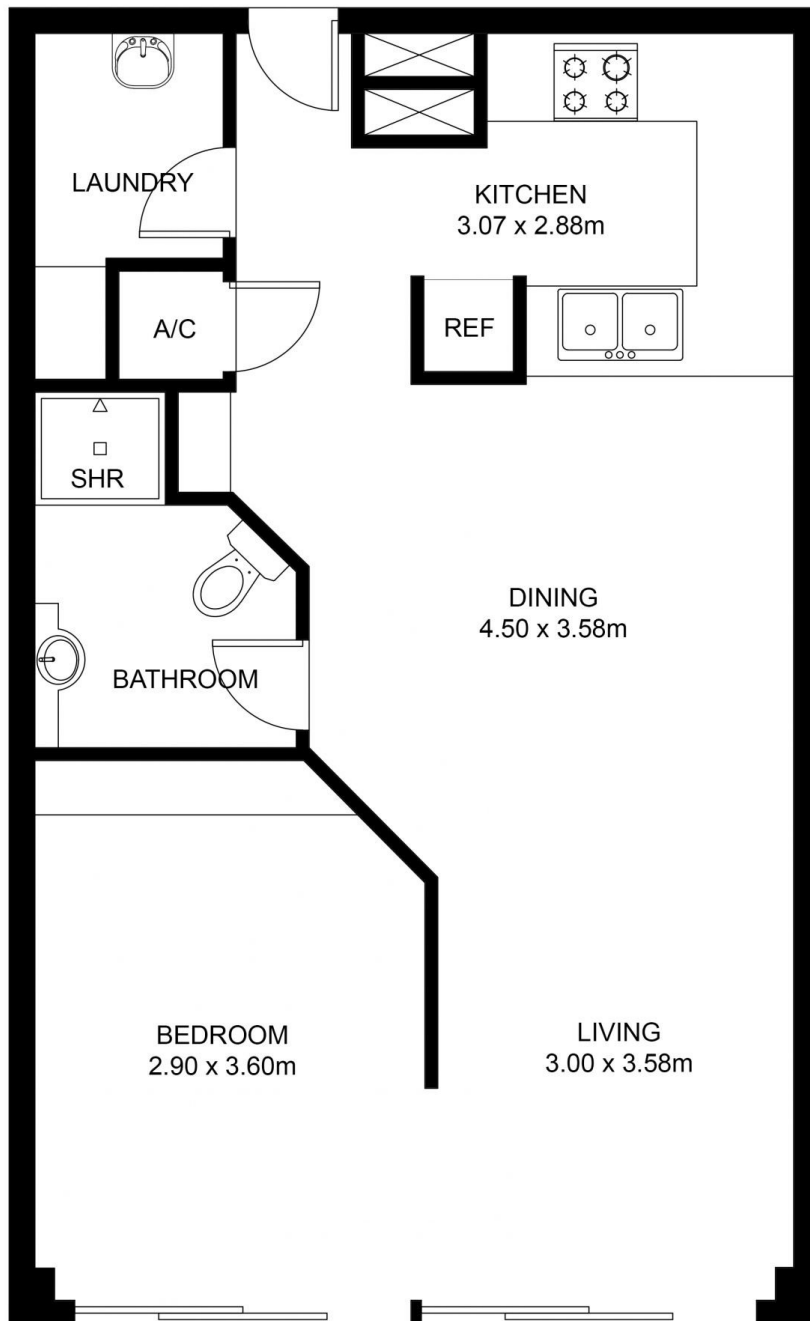
Noel Jenkins

0410 593 694
noel@morton.com.au

Christian Postiglione

0400 074 525
christian.postiglione@morton.com.au

morton.com.au



FLOOR PLAN

This floor plan including furniture, fixture measurements and dimensions are approximate and for illustrative purposes only. BoxBrownie.com gives no guarantee, warranty or representation as to the accuracy and layout. All enquiries must be directed to the agent, vendor or party representing this floor plan.

370/6 Cowper Wharf Roadway, Woolloomooloo, NSW 2011