



# morton.

**Surry Hills** 1307/20 Pelican Street

🛏 2 🚿 2 🚗 2

Discover the epitome of inner city living at The Monument. Perched high in one of inner Sydney's most prestigious communities, this expansive 144 sqm apartment boasts a coveted northerly aspect, treating residents to panoramic views of the sparkling harbour, dynamic cityscape, and lush parklands. Accessible via Level 13, ascend to the desirable Level 14 where this residence awaits, offering the pinnacle of urban living above the bustling streets below.

- Elegantly designed with expansive, interconnected entertaining spaces
- Expansive balconies offering an ideal setting for a casual al fresco living
- State-of-the-art Miele kitchen, adorned with luxurious Caesarstone countertops
- Luxurious master suite boasting balcony access and a lavish ensuite bathroom
- Thoughtfully appointed study alcove, complemented by centralized air conditioning and abundant storage solutions
- Separate oversize laundry with ample storage

**morton.com.au**

## Auction

Saturday, 18 May 2024, 2:00 pm

## View

As advertised or by appointment

## Agents

### Ettiene West

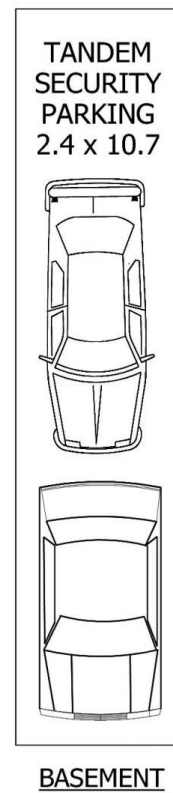
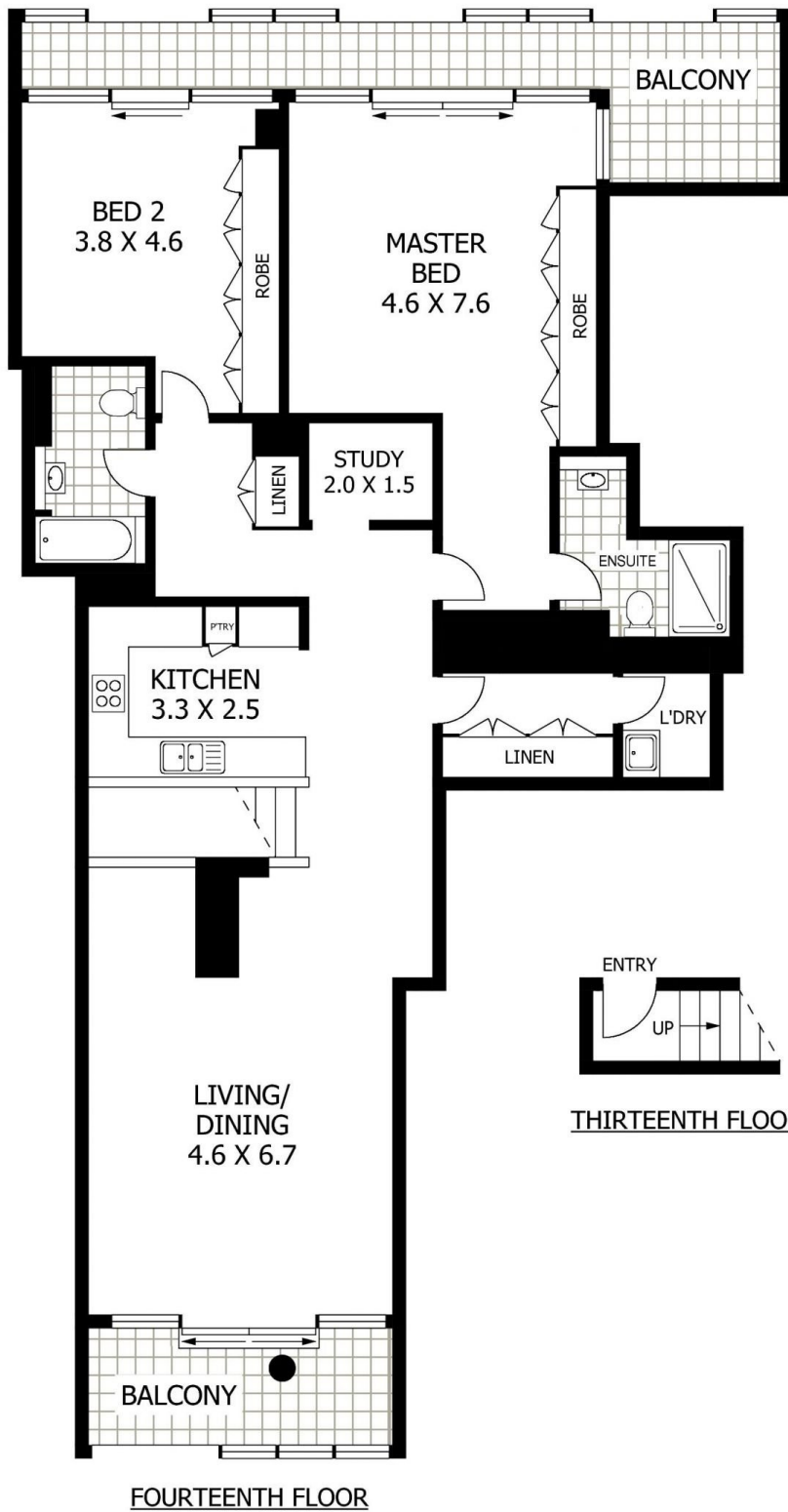
📞 0410 593 749

✉ ettiene@morton.com.au

### Arman Zounuzy

📞 0410 539 793

✉ arman.zounuzy@morton.com.au



**1307/20 PELICAN STREET**

**SURRY HILLS**

**SCAPE Floor Planning Disclaimer:** This floor plan is conceptual only. It is provided for illustrative purposes only and should not be relied upon. We make no guarantee as to the correctness of this plan. All interested parties should make and rely on their own enquiries in determining the accuracy of the information contained in this floor plan.