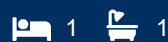




# morton.

North Sydney 912/168 Walker Street



AURA by Aqualand is an iconic new address and symbol of North Sydney's sophisticated future. AURA sets a new precedent for luxury harbourside living. These decadently finished 1, 2, 3 & 4-bedroom residences are the most spacious homes on offer in North Sydney.

North Sydney is coming alive and AURA by Aqualand is the anchor to it all. This project spearheads a multi-billion dollar transformation of North Sydney into a new CBD precinct that will provide new transport, more green spaces, and exciting chapters in the evolving cultural ecosystem of the area. Adding to this vibrant North Sydney lifestyle, an exciting new culinary scene will unfold beneath AURA.

One bedroom apartment features:

- Timber floors across living and dining, and premium carpet in the bedroom
- Luxurious kitchen with natural stone benchtop and splashback, island bench with pendant lighting, fitted with Gaggenau appliances including oven, microwave, rangehood

[morton.com.au](https://morton.com.au)

## View

As advertised or by appointment

## Agents

### Konstantin Melnikov

- 📞 0421 540 424
- ✉️ [konstantin@morton.com.au](mailto:konstantin@morton.com.au)

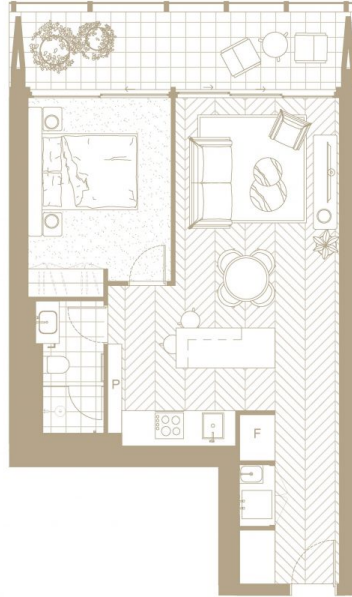
### Ferenc Goemoeri

- 📞 0447 025 423
- ✉️ [ferenc@morton.com.au](mailto:ferenc@morton.com.au)

# AURA APARTMENT LEVEL 9 TYPE 9.12

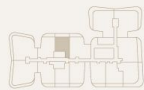
9.12	APARTMENT	63.61M <sup>2</sup>
	BALCONY	12.44M <sup>2</sup>
	<b>TOTAL AREA*</b>	<b>66.05M<sup>2</sup>*</b>

\* Excluding parking and storage.



## LEGEND

F	FRIDGE	WF	WINE FRIDGE
P	PANTRY	BP	BUTLER'S PANTRY
EC	ENTRY CONSOLE	FP	FIREPLACE
B	BAR	L	LAUNDRY



1 BEDROOM      1 BATHROOM

**AURA**  
BY AQUALAND

Disclaimer: This floor plan shows the proposed general configuration of the apartment and location of fixtures, fittings, materials and inclusions (Inclusions\*). The configuration of the apartment when constructed may be different to the floor plan. The precise location of inclusions may also change. Furniture and plantings are shown for illustrative purposes and not included in the sale. Areas are approximate and the plans are not drawn to scale. Solid circular discs are columns. Refer to architectural plans for specific detail.