



# morton.

**Melrose Park** 101/2D Wharf Road

1 1 1

Offering a modern blend of fresh design, stylish finishes and an easy in/outdoor environment, this one-bedroom plus study apartment is a private haven in the popular Melrose Park North waterside security complex. It has been well-designed to embrace low-maintenance living and entertaining, plus it provides a very peaceful retreat that's well-located on the edge of the Parramatta River.

- North-facing enclosed balcony that flows off the living space
- Crisp and fresh interiors feature a light-filled open-plan design
- A great-sized bedroom that includes access to the balcony
- Separate study/media area, designer bathroom and laundry
- Sleek kitchen with stone benchtops and Smeg gas appliances
- Video intercom, elevator access plus a basement car space
- In an architectural complex with roof terrace and city views

## View

As advertised or by appointment

## Agents

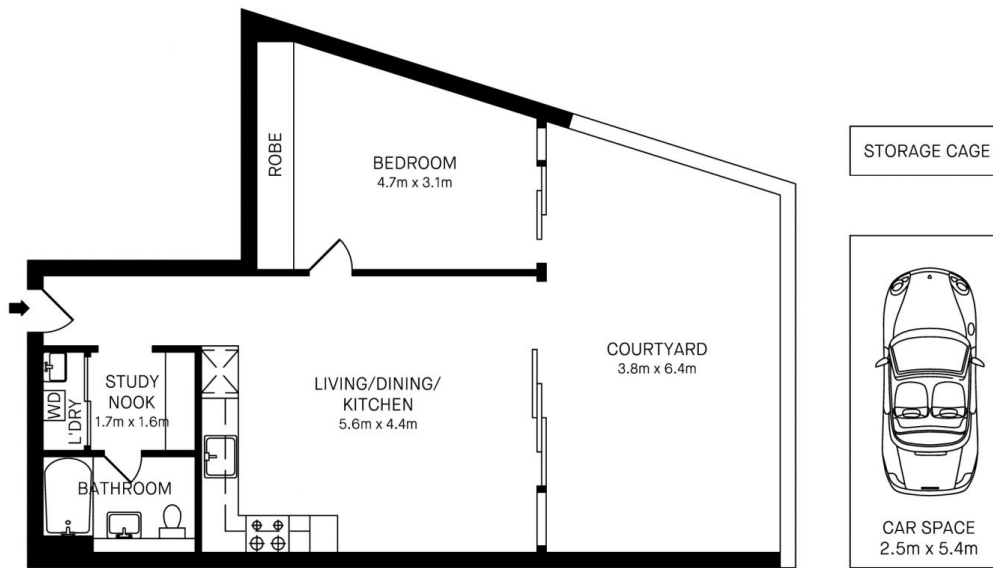
### Dylan Choe

0416 932 977  
dylanchoe@morton.com.au

### Hintha Mya

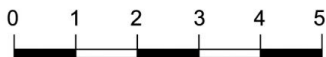
0439 649 618  
hintha.mya@morton.com.au

**morton.com.au**



101/2D WHARF STREET, MELROSE PARK

**morton.**



Please note these measurements are approximate only. The plans is intended as a rough guide for illustrative purpose. It is not warranted or guaranteed to be correct nor it is part of the sale or rental contract.

