



morton.

St Leonards 57/545 Pacific Highway

2
 2
 1

Just a stroll to trendy cafes and boutique shopping of Crows Nest Village, buses, and St Leonards train station, this spacious and modern apartment is ideally suited to young families or working professionals. Bright and sunny with expansive views, this well maintained apartment in a security building with it's prime location is not to be missed.

- Open plan living and dining area flowing onto the balcony
- Large bedrooms with mirrored built-in wardrobes
- Master bedroom with ensuite
- Second bathroom features a free-standing bathtub
- Modern kitchen with dishwasher and gas cooking
- Internal walk-in laundry with dryer and ample storage
- Ducted reverse-cycle air-conditioning throughout
- Secure underground parking
- Ample storage throughout the property
- Secure building with audio-visual intercom
- Short stroll to shops, cafes, schools and transportation

View

As advertised or by appointment

Agent

Martyna Majno

0438 544 328

martyna.majno@morton.com.au

morton.com.au



Total strata size: 103sqm

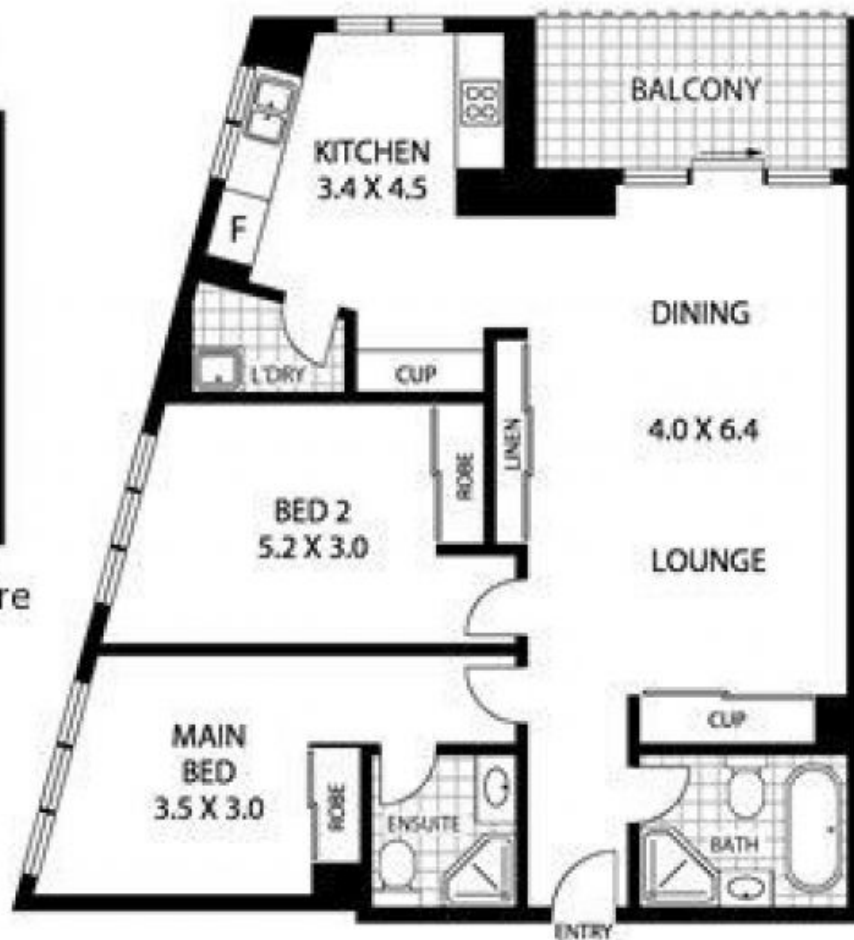
Internal size: 81sqm

Balcony: 8sqm

Basement Car Space: 14sqm



Basement Secure
Car Space



Level 10

57/545-553 Pacific Hwy, St Leonards NSW 2065