



# morton.

**Penrith** 602/10 Aviators Way

 1  1  1

Thornton Central apartments are located on the north side of Penrith train station with uninterrupted park and district views, some with water views towards the picturesque Blue Mountains, situated in the master-planned community Thornton Estate, offering convenient apartment living only metres to Westfield shopping centre, local parks and quality restaurants and cafes.

#### Features Include:

- This one bedroom unfurnished apartment situated on level 6 has engineered timber floorboards throughout, park views and plenty of natural light.
- Covered balcony some with views of the Blue Mountains, Penrith CBD, water canal, cricket oval
- Entertainers eat-in kitchen with stone benchtops, soft close cupboards, mirrored splashback
- Four burner gas cook top with stainless steel appliances, internal laundry with dryer
- LED lighting, reverse-cycle air conditioning, MATV and payTV points in living room and bedroom

[morton.com.au](http://morton.com.au)

#### View

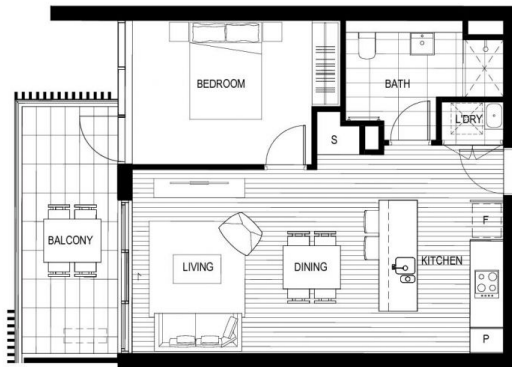
As advertised or by appointment

#### Agent

**Georgia Borland**

 0448 430 247

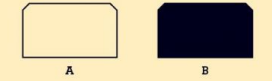
 [georgia.borland@morton.com.au](mailto:georgia.borland@morton.com.au)



# B602

## BUILDING B

1 1 1



INTERNAL: 54M<sup>2</sup>  
 EXTERNAL: 10M<sup>2</sup>  
 TOTAL: 64M<sup>2</sup>



DATE ISSUED: 04.11.2015  
 VERSION: 01

Developed by **StHilliers** **FIRST POINT PROJECTS** | Sales by **LINK** **Home LandDirect** **THORNTONCENTRAL.COM.AU**

**Disclaimer:** This floor plan has been prepared for marketing purposes only. All descriptions, dimensions, depictions and other details in this floor plan (together, the "Information") may not be to scale. The vendor reserves the right to vary or amend the Information without notice. The Information may vary from the actual dimensions, layout and characteristics of the property as built. No third party has any authority whatsoever, either expressly or impliedly, to make or give any representation or warranty or to bind the vendor in connection with the information or the property.

**Sheffield**  
 THORNTON