



# morton.

**Penrith** 803/26C Lord Sheffield Circuit

 1  1  1

Lumina is an exciting precinct perfectly positioned within Penrith's emerging urban center - a vibrant community to suit everyone and every lifestyle. A short walk leads you to Westfield's shops and entertainment and Penrith's famed dining precinct. Convenient transport and excellent schools are close by, as well as the stunning Ron Mulock Oval, BBQ areas and shops.

- Ducted air con throughout, floorboards to living and carpet to bedroom
- Stylish kitchen with island bench, integrated fridge/freezer and microwave
- Large covered balcony accessible from the living area and the bedroom
- Bathroom, with mosaic tiles and a wall hung basin
- LED strip-light to the kitchen, LED downlights and blinds throughout
- Large storage/linen cupboard with custom joinery with ample space
- Exclusive resident-only rooftop garden, sky terrace and BBQ



[morton.com.au](https://morton.com.au)

### View



As advertised or by appointment

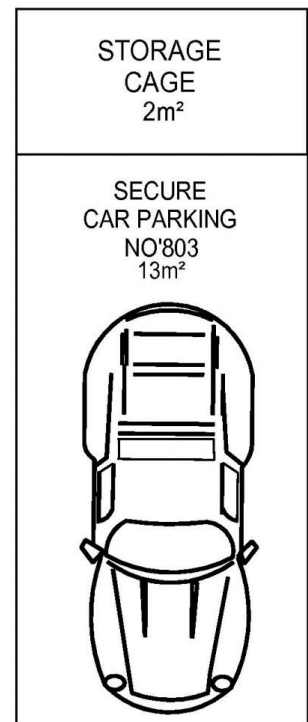
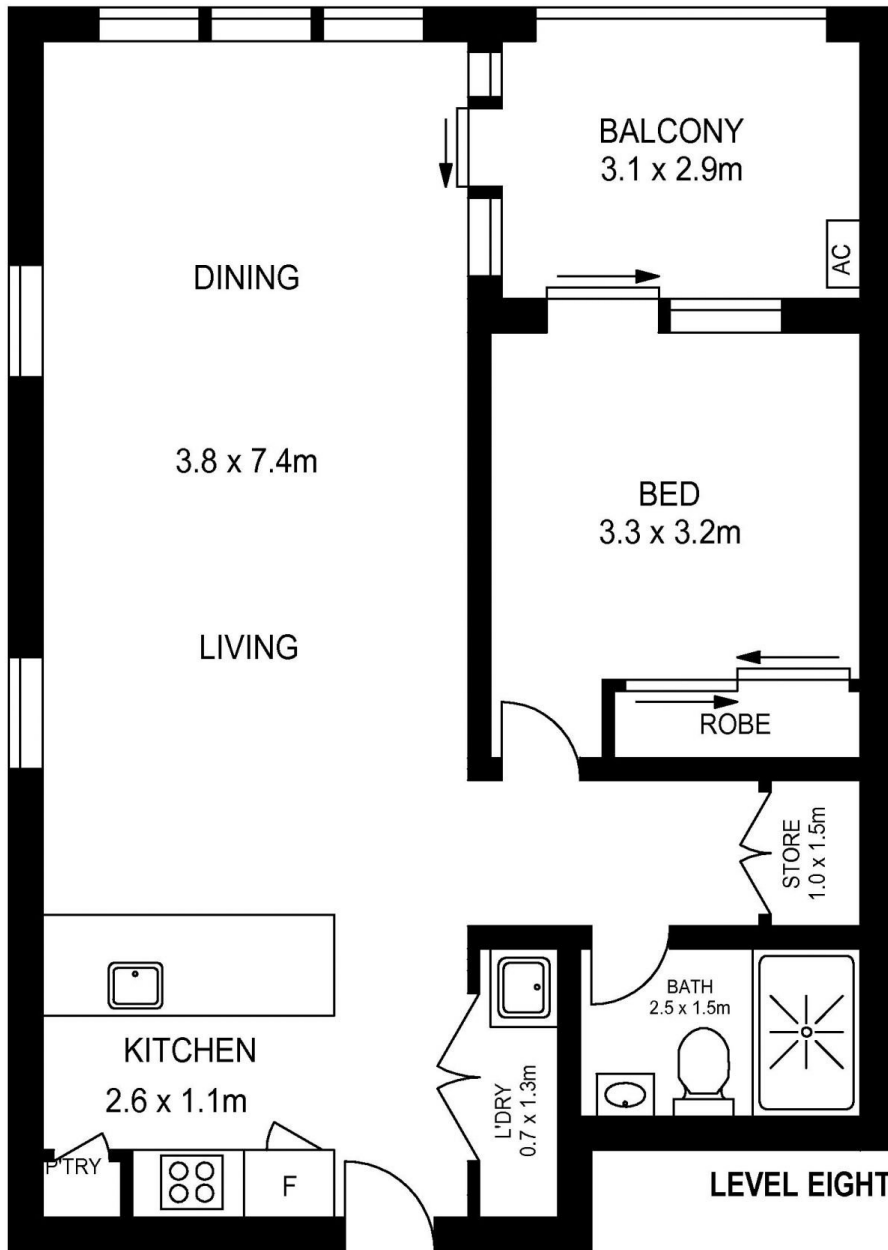
### Agents

#### David Lipman

 0409 663 535  
 david@morton.com.au

#### SJ Singh

 0417 085 519  
 sj.singh@morton.com.au



APPROX. INT. AREA : 64m<sup>2</sup>

APPROX. INT. AREA : 9m<sup>2</sup>

TOTAL AREA (INCLUDING CAR PARKING AND STORAGE CAGE) : 88m<sup>2</sup>

803/26C LORD SHEFFIELD CIRCUIT, PENRITH



Please note these measurements are approximate only.  
This plan is intended as a rough guide for illustrative purposes.  
It is not warranted or guaranteed to be correct nor it is part of  
the sale or rental contract



[www.assetphotographers.com.au](http://www.assetphotographers.com.au)