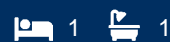




**morton.**

**Rosebery** 219/39 Rothschild Avenue



This sunbathed one bed is located in the inner east suburb - Rosebery, which is quietly and conveniently located near UNSW, East Village Shopping Centre and a variety of fine cafes and restaurants. Crafted by high ceilings and enriched with superb natural light. The facilities include a resort-style indoor swimming pool, gym, onsite building manager.

**Features:**



- Oversized bedroom with built-in robe
- Light-filled, open-plan apartment
- Sunbathed balcony
- Contemporary kitchen with gas cooktop
- Ducted air conditioning
- Study/ 2nd bed
- Internal laundry
- Storage cage

**View**



As advertised or by appointment

**Agents**

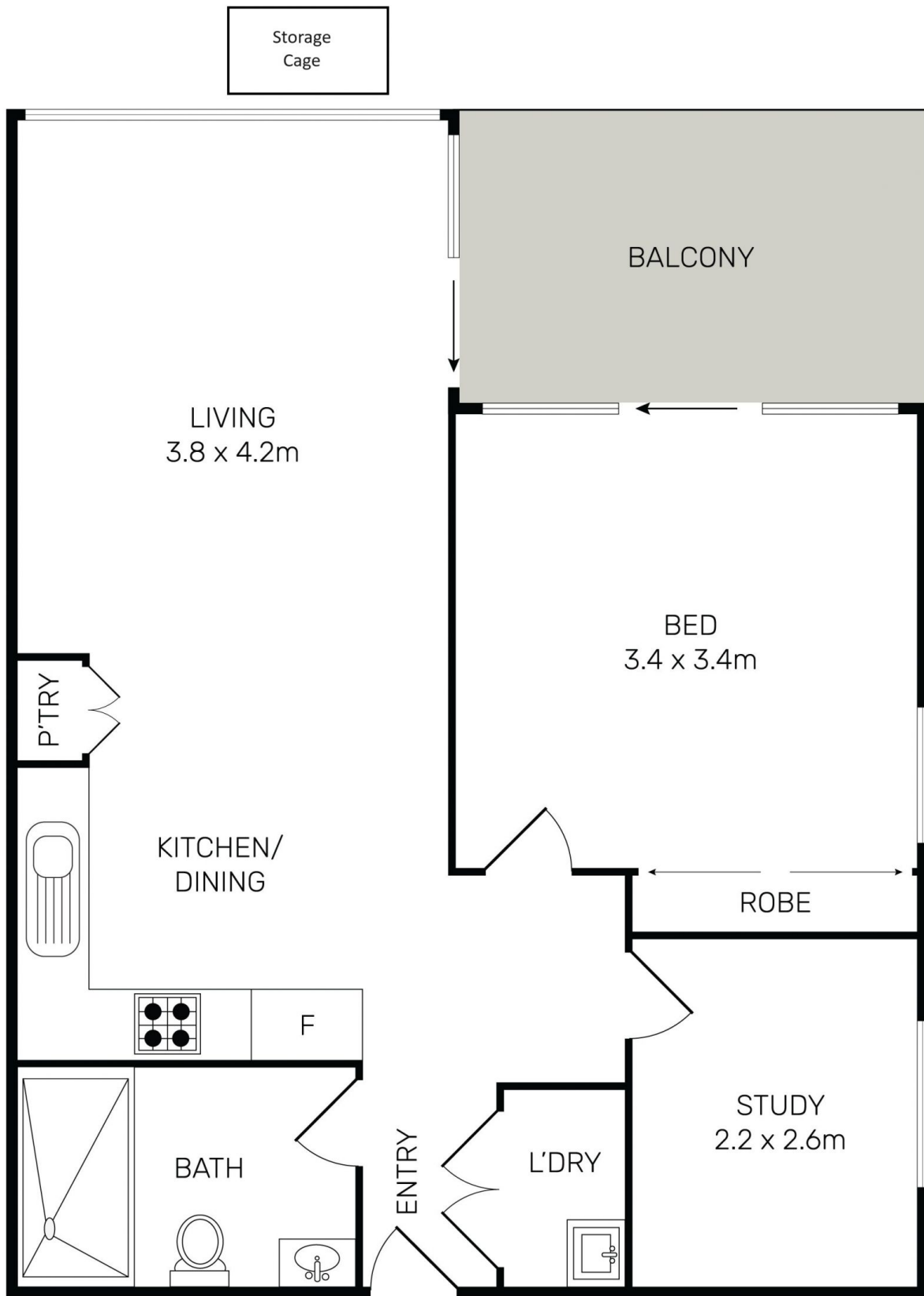
**Calvin Chan**

-  0406 888 028
-  calvin@morton.com.au

**Jackson Figueiras**

-  0448 764 345
-  jackson@morton.com.au

**morton.com.au**



All information contained herein is gathered from all sources we believe to be reliable. However we cannot guarantee its accuracy and interested parties should rely on their own enquiries.



**219/39 Rothschild Avenue, Rosebery**