



# morton.

Sydney Olympic Park 726/2 Betty Cuthbert Avenue

🛏 2 🚿 2 🚗 2

\*Access from 2A Betty Cuthbert Avenue Sydney Olympic Park\*

Style, space and light-filled design combine to create this quality two-bedroom apartment in a premium resort community that deserves its reputation for excellence. Capturing an elevated panorama that stretches over parkland to the city skyline, it offers a private and easy-to-maintain retreat that's set high in the well-regarded Botania building, just around the corner from Bicentennial Park and within strolling distance to the train station, local shops and Sydney's best entertainment venues.

- A prime top-floor position commanding a city skyline view
- Exclusive access to the building's premium resort amenities
- Bright, airy and open layout with lounge and dining areas
- A wide full-length balcony accessed from all major rooms
- Two great-sized bedrooms both open onto the balcony
- Sleek modern kitchen with stone benches and gas cooking
- A well-appointed bathroom, ensuite and internal laundry

[morton.com.au](https://morton.com.au)

### Auction

Saturday, 25 May 2024, 1:30 pm

### View

As advertised or by appointment

### Agents

#### Dylan Choe

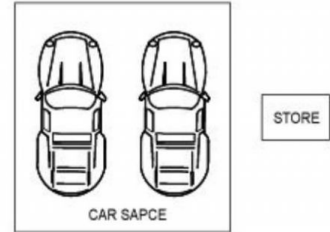
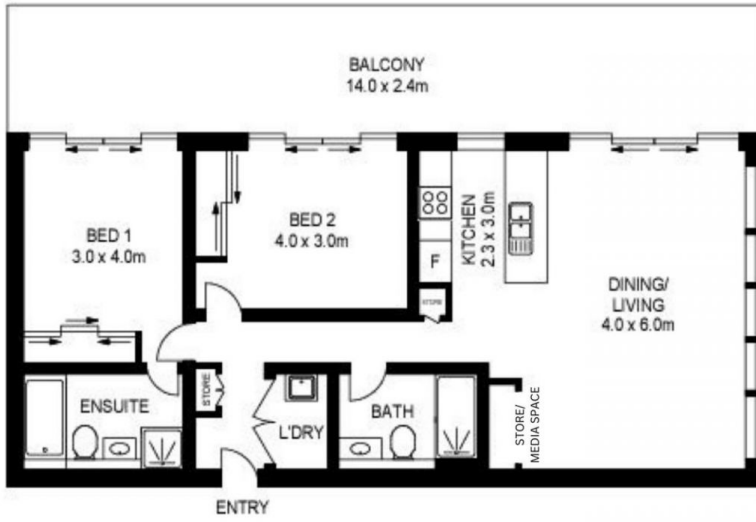
📞 0416 932 977

✉ [dylanchoe@morton.com.au](mailto:dylanchoe@morton.com.au)

#### Hintha Mya

📞 0439 649 618

✉ [hintha.mya@morton.com.au](mailto:hintha.mya@morton.com.au)



726/2A BETTY CUTHBERT AVENUE, SYDNEY OLYMPIC PARK



www.asselphotographers.com.au

Please note these measurements are approximate only. The plans is intended as a rough guide for illustrative purpose. It is not warranted or guaranteed to be correct nor it is part of the sale or rental contract.

