



morton.

Erskineville 80/20 Eve Street

🛏 2 🚿 2 🚗 1

Offering a secluded position within the sought-after 'Glo' complex, this superb 148 sqm apartment is designed to maximise space, function and flow. The Complex also consists of a communal garden and resort-style facilities, plus the lifestyle benefits of having cafes, Sydney Park, transport links and restaurants a stroll from your door.

- Offering 148sqm approx on title
- Secluded in the complex with only two residences on the landing
- Modern open plan living and dining area with a fresh light colour scheme
- Spacious bedrooms with built-in wardrobes
- Master bed features an ensuite
- Generous kitchen with stone benchtops complemented by Smeg and Bosch appliances
- Modern bathroom equipped with bathtub & vanity storage
- Large north-facing entertainers terrace
- Security building with intercom and onsite building manager
- Separate study/office room

View

As advertised or by appointment

Agents

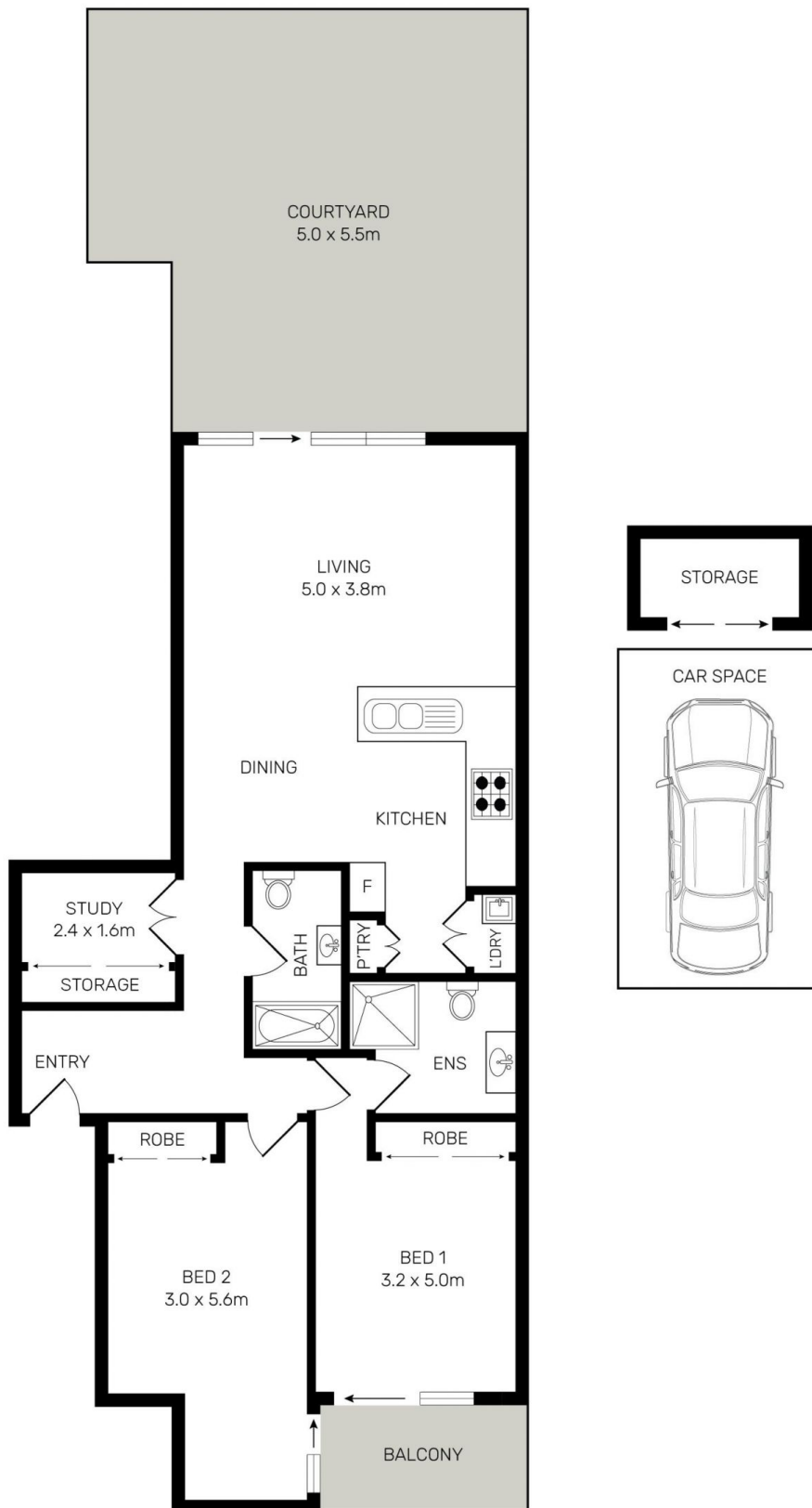
Calvin Chan

📞 0406 888 028
✉ calvin@morton.com.au

Jackson Figueiras

📞 0448 764 345
✉ jackson@morton.com.au

morton.com.au



All information contained herein is gathered from all sources we believe to be reliable. However we cannot guarantee its accuracy and interested parties should rely on their own enquiries.



80/20 Eve Street, Erskineville